



**mmm**  
nové město nad metují

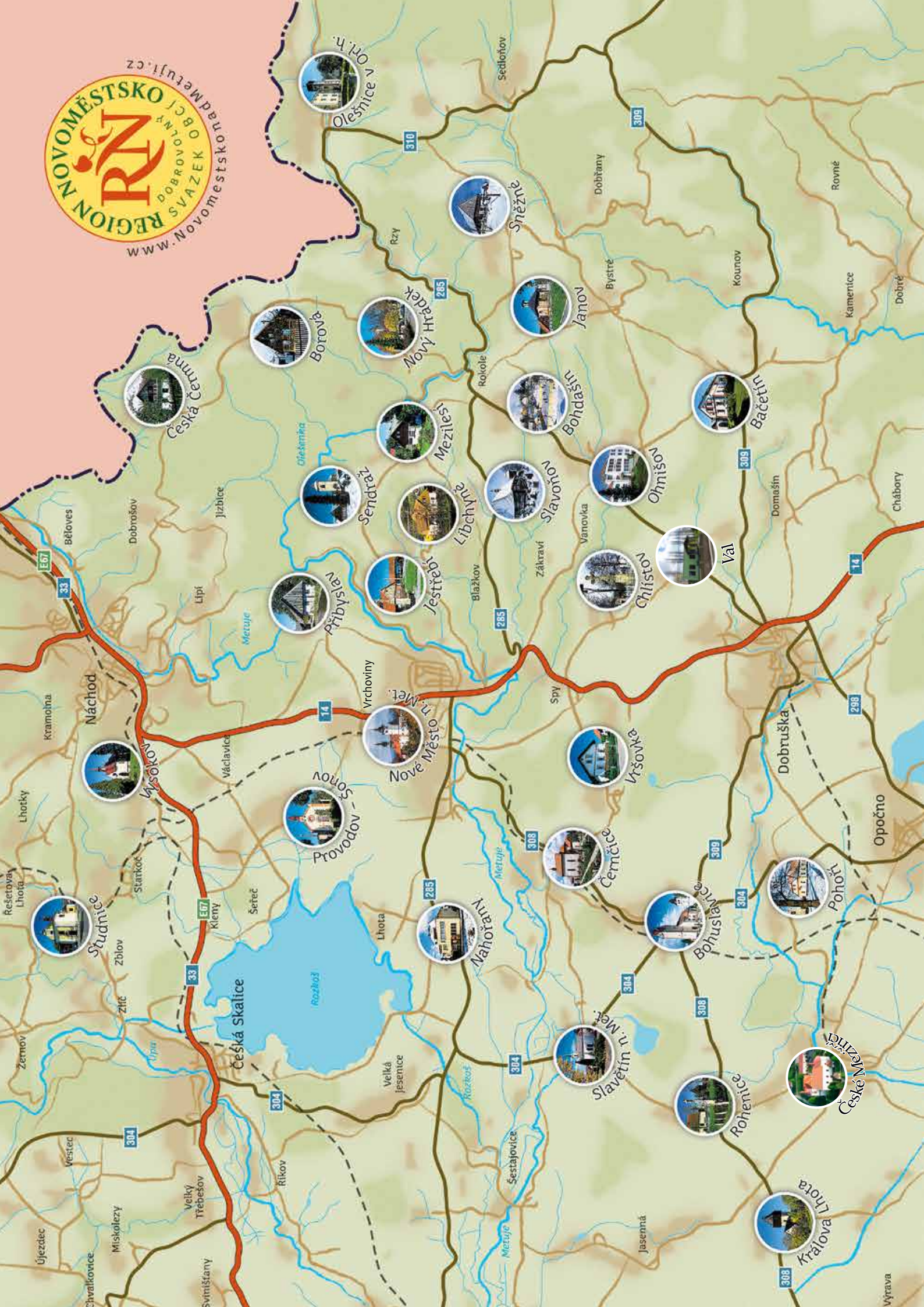
Published by Nové Město nad Metují 2018

# WELCOME TO NOVOMĚSTSKO

REGION ■ CULTURAL EVENTS ■ SERVICES ■ ACCOMMODATION  
FOOD ■ CYCLE ROUTES ■ NATURE TRAILS ■ WALKS  
INFO CENTRES









## The word from the deputy Mayor

Dear Nové Město nad Metují residents and visitors,

On behalf of the town, I would like to introduce our information yearbook, whose bold objective is to let you know about all major events taking place within our town and nearby. We also want to provide you with all important addresses, telephone numbers and information you use in everyday life – or of use during your stay in our town or neighbouring villages for visitors – in printed form at one place.

‘Welcome to Novoměstsko’ is available free of charge at the information centres within our region and at accommodation facilities. It is freely available to download in electronic form from the Nové Město nad Metují website. Our team of authors would be grateful for any comments and suggestions.

Novoměstsko is small in size, but for that it is cosier and full of diversity. Many years ago, a total of 30 towns and villages located from the Orlické Mountains to Hradec Králova decided to create the Novoměstsko Voluntary Union of Villages in order to co-operate together more. This publication is evidence of this co-operation. Along with the mayors of all the villages, we wish our fellow residents much enjoyment in discovering new sites of beauty within our region. And for those visiting this corner of the country, we hope you enjoy your time in Novoměstsko and will be happy to revisit us in future.

Warm regards

Ing. Michal Beseda, MBA  
Deputy Mayor, Nové Město nad Metují



## Basic information

**Number of villages:** 30

Bačetín, Bohdašín, Bohuslavice, Borová, Černčice, Česká Čermná, České Meziříčí, Chlístov, Janov, Jestřebí, Králova Lhota, Libchyně, Mezilesí, Nahořany, Nový Hrádek, Nové Město nad Metují, Ohnišov, Olešnice v Orl. horách, Pohorí, Provodov-Šonov, Přibyslav, Rohenice, Sendraž, Slavětín, Slavoňov, Sněžné, Studnice, Val, Vršovka, Vysokov

**Elevation:** 259 m Zbytka ÷ 1084 m Vrchmezí

**Largest body of water:** Rozkoš reservoir – 1 000 ha

**Drainage divide:** European North and Baltic Sea drainage divide – Olešnice v Orl. h.

**Rivers and watercourses:** Metuje, Olešenka, Bohdašínský potok, Janovský potok, Libchyňský potok, Zlatý potok, (Litá), Roudnický potok, Černčický potok, Rozkoš, Ohnišovský potok, Bačetínský potok, Rovenský potok, Olešnice...

**Nature reserves:** Orlické hory PLA, Peklo, Zbytka, Čermenská louka, Mnichovec, Dubno.

**Border crossings:** Čihalka – Kozia Hala (DZ), Česká Čermná – Brzozowie, Olešnice v Orl. h. Kutl – Kociol.

## Contents

Presentation of the Novoměstsko Region villages and towns.....	4
Events in the Novoměstsko Region in 2017.....	10
Services in the Novoměstsko Region .....	13
Map of Nové Město nad Metují .....	14
Accommodation and food .....	19
Colouring-in for children .....	22
Cultural Monuments in the Novoměstsko Region .....	25
Marked cycle routes .....	26
Trip to the Klopotov deer park .....	27

## BAČETÍN

[www.bacetin.cz](http://www.bacetin.cz)

Located in the foothills of the Orlické Mountains on the Dobruška—Dešné v Orl. h. route, about 15 km from the border with Poland. Bačetín is an old Slavic hamlet settled by Czechs in the 12th to 13th century. In the 19th century, the village was part of the Opočno estate. It is currently within the Rychnov nad Kněžnou district. Since 1960, the hamlet of Sudín with approximately 60 inhabitants has been a part of the village. Bačetín is one of the few upland villages which have not seen a loss of population. There is no church in the village, and as such a new funeral hall was built in here in 1991 which is used for the needs of the whole Dobruška region. A sports centre is gradually being built, which contains a tennis court where the traditional football tennis tournament 'the Village Mayor Cup' takes place. The hamlet of Sudín is located next to the beautiful Zlatý potok (Golden Stream) valley. The surroundings are ideal for cycle trips or hiking. Bačetín is part of the 'Kačenka's Fairytale Kingdom' and its patron is 'Bludičky' (Will-o'-the-wisp).



## BOHDAŠÍN

[www.bohdasin.cz](http://www.bohdasin.cz)

Bohdašín is a small mountain village located on the road from Dobruška to Nový Hrádek. The village also includes the hamlets of Bydlo, Vanovka and the pilgrimage site of Rokole. The first written record of Bohdašín village dates back to 1534. In 1822, Bohdašín purchased its first bell. In 1829, hand weaving began in the village. In 1963, teaching at the single-class school ended. Today, the school building is a carpentry workshop with 4 small apartments in the attic. New houses are being built here, old buildings are being renovated and cottage owners



conscientiously look after their old wooden cottages, characteristic for the region. There is a carpentry workshop, car repair shop, metal working shop and a number of independent entrepreneurs working here. There is also a sports airfield for ultralight aircraft and powered paragliders. The local voluntary firefighters don't just undertake their work professionally, but are also the initiators of the village's cultural and social life.

## BOHUSLAVICE NAD METUJÍ

[www.bohuslavice.com](http://www.bohuslavice.com)

The first mention made of Bohuslavice dates back to 1361. At that time, Bohuslavice was still part of the town of Dobruška. Still today, when walking through the village the Catholic St Nicholas Church from the 13th century emanates the enchantment of the old, a reminder of the Gothic period. The large belltower next to the church dates back to the Hussite period. Other significant buildings include the Catholic clergy house where J K Rojek lived – a local parish priest, patriot and Czech revivalist – and also the old protestant school. Other old monuments include the statue of St Wenceslas in front of the church mentioned, and Our Lady in the park in the centre of the village, and St John on Věžiště island. There



is a set of fish ponds in Bohuslavice dating to the turn of the 14th and 15th centuries where carp used to be bred. The Zbytka nature reserve is also on the village's territory, where rare protected flora grow uniquely in the whole of north-east Bohemia.

## BOROVÁ

[www.borovaunachoda.cz](http://www.borovaunachoda.cz)

The history of the village begins on its highest hill — Strážnici (elevation 691 m). In ancient times, it was of great importance. Under the rule of Ottokar I and II of Bohemia, the Klodzko Charvats settled in this border country of the 'Czech Corner' in order to guard the land. The first written record of the village dates back to 1445 in the Náchod commemorative book, with the next mention 100 years later in the Zemské desky (Land Tables), where the village was named Borowey, part of the Náchod estate. The name Borová likely does not come from the meaning of a village found in a pine wood (borový les), but rather of a village or farmstead owned by someone called Bor.



The village was important in modern history between 1935 and 1938 when Borová became one of the key sites of the Czechoslovak border fortification system. Five heavy fortification buildings are located in the village which date to this time. Currently, the village has a population of 195, the lowest figure in written history. There are 133 houses here, 68 of which are used as holiday homes.

## ČERNČICE

[www.cerncice.eu](http://www.cerncice.eu)

The village of Černčice is one of the oldest villages in the Novoměstsko region. The first record of it dates as far back as 1312. The village is dominated by the parish church of St James the Greater from the 14th century. Over the





following centuries it was renovated a number of times. In 1613, a large four-storey belltower was built beside the church. The first three storeys are brick, while the final is wooden. On top of the belltower is a mansard roof. All necessary basic services are provided for the village's citizens. There is a cultural and sports building with hall, a large outdoor sports area with extensive options for use, and a playground is located nearby. The beautiful and untouched countryside around the village and the Metuje river valley provide many great walking and cycling trips.

## ČESKÁ ČERMNÁ

[www.ceskacermna.cz](http://www.ceskacermna.cz)

The first written record of Česká Čermná dates back to 1448. From 1449, the Tamchynas of Doubravice are recorded as being owners, using a coat of arms – half deer, and for 50 years the village was called Tamchynova Čermná. The village has an area of 890 ha and an elevation of over 500 m, two thirds of which is woodland. The village includes an elementary school, nursery school, post office, police station, exercise hall with small playing field, the St Wenceslas church and the 'Louky' natural cultural monument. Also deserving of mention is the beautiful architecture of the mountain cottages here, in particular the Bartoňova hájenka gamekeeper's house built to a design by architect Dušan Jurkovič. The village lies on the border with the Republic of Poland, and the Česká Čermná–Brzozovice foot crossing is located here. Near the Polish border, you can take cycle route 4306 linking Kudowa-Zdrój with Česká Čermná, which also includes two stops for resting. On the Czech side, you can also visit the LOUKY nature reserve in Česká Čermná, and take a trip to Peklo or the Dobrošov fortification complex.



## ČESKÉ MEZIŘÍČÍ

[www.ceskemezirici.cz](http://www.ceskemezirici.cz)

České Meziříčí is located at the confluence of Zlatý potok and the Dědina river near the Orlické Mountains foothills, and its immediate surroundings include one of the oldest archaeological sites in East Bohemia. The first record of the village dates back to 1384, but archaeological evidence is thousands of years old. People

began building the village itself at the turn of the 13th and 14th centuries. The hard work of many generations has transformed the landscape into its current agricultural nature and also the factories linked to it, dominated by the sugar refinery.

The Baroque St Catherine church from 1748 built by Count Rudolf Colloredo on the site of an original wooden church is an important historic building in the village. This church is one of the most beautiful rural church architecture buildings in the region. The village includes the former strongholds of Vranov and Tošov. Many important figures were born in České Meziříčí, such as peasant rebel, Jakub Němeček, Bishop of Hradec Králové, Karel Otčenášek and others.

## CHLÍSTOV

[www.chlistov.unas.cz](http://www.chlistov.unas.cz)



Chlístov is a small village roughly 4 km from Nové Město nad Metují and Dobruška. We do not know when it was founded. According to oral lore it was originally called Lískov – likely from numerous hazel bushes (lískový keř) which grew at the site of the current village. The village's first copper stamp displayed three hazel twigs. The village chronicle has records of the owners of various settlements from around 1760. In 1904, a firefighter's society was founded in the village. In 1978-79 a fire reservoir was built in the village. In 1983, the bell was consecrated. The local volunteer firefighters organise dances, a children's carnival and feasts in the village.



## JANOV

[www.janovobec.cz](http://www.janovobec.cz)



The first written record of the village dates back to 1544, and from 1848 it has been part of the Opočno estate. Since 1960, the village has included the hamlet of Tis. There is beautiful countryside surrounding Janov and Tis, with the Olešenka river valley edges with wooded slopes, knolls offering unique views of the wider surroundings, an intimate valley and stream with extraordinary flora and a number of traditional mountain cottages forming a wide range of aesthetic landscapes. Particularly attractive are the traditional wooden Czech border region houses and farmhouses from the early 19th century. The council building with public library and the St Joseph chapel are available for citizens to use.

## JESTŘEBÍ

[www.jestrebinadmetuji.cz](http://www.jestrebinadmetuji.cz)

Jestřebí is a village located 3 km from Nové Město nad Metují towards the Orlické Mountains. It is unusual in that it includes a relatively large territory spread out from the sunny meadows above Nové Město nad Metují to the forested slopes leading down into the deep valley known as Peklo (Hell) and beyond. Since March 2004, the village has had its own village symbols, coat of arms and flag. The Volunteer Firefighters take care of cultural activities along with the council. Some of the main social events include the traditional annual feast, potato pancake feast, and the pig roast at the end of the holidays. The library is an integral part of the village's cultural life. There are sites of cultural interest, a wayside cross and a chapel to see in the village.

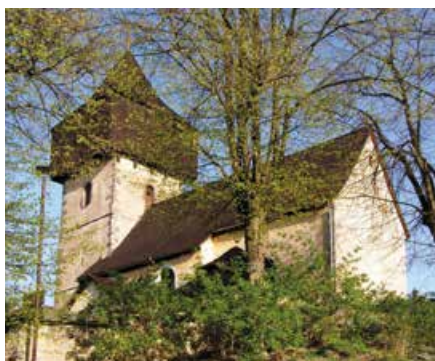




## KRÁLOVA LHOTA

[www.kralovalhota.cz](http://www.kralovalhota.cz)

The first written record of the village dates back to 1356. In 1848, it was still part of the Opočno estate, but in the following year it became an independent village. Around 1850 it switched between the districts of Nové Město nad Metují and Dobruška, and since 1960 it has been a part of the Rychnov nad Kněžnou district. The village is dominated by the originally Gothic St Sigismund church. It is already recorded in 1344, but according to priest Spiroch it was built around the year 1306. In 1912, sculptor Karel Hladík was born in the village, a major artist of the 20th century whose works can be found in many galleries domestically and internationally. Some of his works are displayed in the Hladík gallery at the castle in Rychnov nad Kněžnou.



## LIBCHYNĚ

[www.libchyne.cz](http://www.libchyne.cz)

A small village located in the beautiful Libchyňský potok valley about 4 km from Nové Město nad Metují between the villages of Slavoňov a Jestřebí. A walking route passes through the village from Rezecká street and Pavlátova louka to Sendraž and Peklo. It is not known exactly when the village was founded, but by 1440 it belonged to the castle of Budín in Krčín. Since 1995, the village has had a new municipal building with firehouse and hall which is also used by the TJ Sokol gymnastics and sports organisation for table tennis. In



addition to the beautiful natural scenery, walkers passing through the village can also admire the fantastic sandstone cross dating back to the mid-19th century and the 1922 chapel. The village is a great place for quiet living in beautiful countryside.

## MEZILEŠÍ

[www.mezilesi.cz](http://www.mezilesi.cz)



The settlement of Mezileší is first mentioned in 1403. At that time, it was still a part of Krčín, but half a century later it was a part of the town of Náchod. In the past it included 11 farmhouses, three of which were large farmsteads, and two smaller farmsteads. The village had its greatest population in 1869 when 550 citizens were counted in the census. Due to past feudal circumstances and the division of the originally large farms amongst heirs over many generations, these large farms ceased to be, and many small farms were formed worked on by people with the same surname. The surname Holý grew from farmstead no. 6, Linhart from no. 12, Škoda from no. 31, Suchánek from no. 37 and Drašnar from no. 27. Their descendants live here to the present day, although the village now only has around 200 citizens.

## NAHOŘANY

[nahorany.blog.cz](http://nahorany.blog.cz)

The village is located about 5 km from Nové Město nad Metují in the direction of Jaroměř. The villages of Lhota, Doubravice, Dolsko and Městec are also administered by Nahořany. Its history dates from 1360 as evidenced by the year carved into the cellars of the forge, building no. 2. Anyone who visits the village from Nové Město nad Metují will be taken by a curiosity dating back to the second half of the 16th century, a huge gate made from sandstone blocks standing at the entrance to the village, with two lions at the top and a side entrance above which a large sandstone block has been placed with a round hole and a memorable old



title. At the junction at the east entrance to the village is a pleasant park on which a memorial to the fallen of the First World War was constructed in 1923. Near the park, on the other side of the road, is 'Švěhlův dům', today used as the council and post office building.

## NOVÉ MĚSTO NAD METUJÍ

[www.novemestonm.cz](http://www.novemestonm.cz)

Nové Město nad Metují was founded in 1501 on a rocky promontory above the Metují river surrounding it on almost all sides. The House of Pernštejn imprinted the town's characteristic Renaissance appearance on it in the 16th century. The town's most striking feature is its castle – a National Cultural Memorial – which can be toured and which also has a well kept castle garden with a unique wooden bridge designed by Dušan Jurkovič and statues of dwarves from Baroque sculptor Matyáš Bernard Braun's



workshop. Other sites of interest in the town include the sundial, the statue of founder, Jan Černický of Kácov, the 'Metuje Allegory' statue on the rock high above the Metují and the rock itself, on which the town's historic centre is built. Hundreds of droplets trickling down the rock lit up by the setting sun or artificial lighting give visitors a truly remarkable view. Also attractive are the two Nové Město towers – the castle's Máselnice and Zázvorka, part of the town gallery. Visitors can see exhibitions on the history of the town and trades undertaken in the Orlické Mountains and the town's links with important composer, Bedřich Smetana, at the town museum. Unusual is the large exhibition on mixed forestland, birds and mammals, and an exhibition telling of the history of the production of the renowned Prim brand watches. But it's not just worth visiting







Nové Město nad Metují for its history and historic buildings. The town will welcome you with its friendly atmosphere and picturesque square where you can enjoy one of the best home-made ice-creams around, or some excellent coffee. A walk through the street known as Zádomy will also enchant you, as you cross the whole square along the town walls and admire the unique view over the Metuje river valley.

## NOVÝ HRÁDEK

[www.novy-hradek.cz](http://www.novy-hradek.cz)

Nový Hrádek is located at the foot of the north-eastern section of the Orlické Mountains. Its lowest point is at an elevation of 417 m, and its highest point on the peak of Šibeník lies at an elevation of 674 m. The first written record dating to 1362 describes Hrádek as a parish village. It is said to have been founded during the reign of Ottokar I of Bohemia or Wenceslas I. Hrádek saw expansion at the end of the 13th century when Frymburk castle was built, whose ruins can still be seen today. Besides



Frymburk castle, its greatest historical sites include the church of St Peter and Paul from 1721–23, the 1747 Marian column on the square,



the 1756 chapel of St John of Nepomuk and the town's water fountain built in 1864. The village is located within beautiful natural scenery and is a great base for hiking and tourism (ski lift, walks with wonderful views).

## OHNIŠOV

[www.ohnisov.cz](http://www.ohnisov.cz)

Ohnišov is an upland village spread out over the Orlické Mountains foothills. The first written record of the village dates back to 1360, where it is said that Ohnišov is located under the Zákřaví church. The village has two dominant buildings. The first of these, of which all its residents are proud, is the local Masaryk school designed by architect Freiwald, built in 1932 at a cost of 1 million crowns. The second building is the St Cyril and Methodius church, owned by the village because it was local citizens who built it at the end of the 19th century through their own collections. Writer, Pavla Buzková, was born in the village, and she drew a lot of inspiration from the region in her books and is buried in the local graveyard.



## POHOŘÍ

[www.obecpohori.cz](http://www.obecpohori.cz)

The first record of the village of Pohoří was found in the foundation documents for the town of Dobruška issued by Mr Dobrušský for the estate of churches in 1361 and 1367. The village was positioned along the mediaeval main road leading from the Orlické Mountains and this meant it gradually grew in size. Today it has a population of 600 and there is a nursery and elementary school here. One of the village's historic buildings is the church of St John the Baptist, whose foundation stone was laid in 1902 AD and which underwent general exterior repairs in 2000–02. The village is also a renowned destination for



summer entertainment and concerts at the local natural stadium whose history dates back a long way (some of the artists to have performed here include Olympic, Turbo, No Name, Chinaski, Tublatanka, Tři sestry, Divokej Bill, František Nedvěd and Petr Novák).

## OLEŠNICE V ORLICKÝCH HORÁCH

[www.olesnice.net](http://www.olesnice.net)



Olešnice v Orlických horách marks the entrance to the Orlické Mountains and is a border village neighbouring an 18 km long border with Poland. The first written record of Olešnice dates to 1345. The Olešenka stream goes through the village. The picturesque sloping square full of greenery centred around the water fountain forms the village's centre, with covered steps leading from the square to Kostelní peak and the Baroque Saint Mary Magdalene church from 1705. A walker's border crossing with Poland has been open here since 1996, and since 2005 another operates in Kociol valley. The village also boasts a mechanical nativity scene carved from lime wood by local weaver, Mr Josef Utz.



## PŘIBYSLAV

[www.obecpribyslav.cz](http://www.obecpribyslav.cz)

Přibyslav is a picturesque little village built on a gentle hill at an elevation of 500 m. We cannot determine exactly when the village was founded, but some reports say there were cottages here in the 11th century. The first record mentioning cultural life in the village is linked to the library which was founded in 1836. The





## ROHENICE

[www.rohenice.cz](http://www.rohenice.cz)

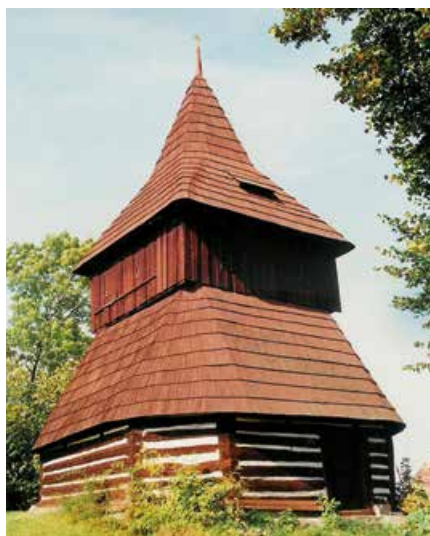
oldest and still active group in the village is the Volunteer Firefighters. They have men's, women's, older and younger children's teams which compete and they have also organised their own 'Přibyslav Cup' competition since 1993 which a number of firefighting societies travel to from the vicinity. The firefighters also organise the traditional 'Stínání kohoutů' (Cockerel beheading) feast.

## PROVODOV-ŠONOV

[www.provodovsonov.cz](http://www.provodovsonov.cz)



In the middle of the geographical triangle of towns Česká Skalice, Náchod and Nové Město nad Metují is Provodov-Šonov. The first record of the site of today's municipality can be found in Cosmas's famed *Chronica Boëmorum*. It dates back to 1068 when the Prague bishop was chosen on the peak known as Dobenina (today's Václavice district). In 1999, the village became a founding member of the 1866 Union of Villages, and is one of the most attractive in the region. There is a small school in the village which can boast 350 years of history. Clubs in the village play a large role in life in the village, including the Volunteer Firefighters, the Šonov Sokol gymnastics club and the Provodov Sokol focused on football. Its amenities include two stores selling mixed goods, a number of typical rural pubs, and last but not least the Orelna building where large social events take place.



According to legend, the village was founded by Prince Rohan who owned the castle and fortress which stood at the site of today's building number 15. The village is likely named after its founders. The village is dominated by the wooden belltower with its sloping corners on the ground floor and the narrower storey above, likely built in the second half of the 16th century. The timber in the belltower comes from Tůří forest. Also worth viewing is the St John the Baptist chapel of ease from the 14th century, which contains a rare late Gothic winged altarpiece from 1533. Other valuable structures include the statue of St John of Nepomuk, the Neo-Classical manor from 1855 and two stone crosses.

## SENDRAŽ

[www.sendraz.cz](http://www.sendraz.cz)



The village sits at the foot of the Orlické Mountains on top of a hill and visible from all sides. It is a sought-out destination both for walkers and as a recreational site. According to local chronicles, the village was founded in the 12th century. Due to its visibility and relative proximity to the border, Sendražský kopec (Sendraž Hill) (elevation 609 m) was used to as a watchpost. Fires were lit here to act as smoke or light beacons to warn of approaching enemies. To this day, the locals still call the hill 'Varta' (the Watchpost). The local fire brigade provides protection against fire, and also hospitality facilities. As such, fire fighters can offer refreshment not just to colleagues, but also to local holidaymakers and walkers.

## SLAVĚTÍN NAD METUJÍ

[www.slavetinnadmetuji.cz](http://www.slavetinnadmetuji.cz)

The first written record of the village dates back to 1495. The village is located in the Metuje river valley. The council and library are located in the former school building. There is a livestock production centre here and three private farms, one focused on breeding red deer. Refreshment can be found in the village in the private shop, bar and catering centre. Points of interest include the new river Metuje channel built by prisoners of war during the First World War. In 2000, after a number of years of absence, a restored Volunteer Firefighters association added to the over a hundred-year history of volunteer firefighters in the village, and celebrated its 125th anniversary in 2007. With funding from the Hradec Králové Region, the village built a new multipurpose sports ground with sanitary facilities within the council premises.



## SLAVOŇOV

[www.slavonov.cz](http://www.slavonov.cz)

This village is located about 5 km from Nové Město nad Metují along the road to Nový Hrádek. It is mentioned as far back as 1384. The village is responsible, amongst other things, for running the local nursery school, two firehouses and graveyard management. Slavoňov is particularly dominated by its beautifully preserved all-wooden church built in 1553 surrounded by a round graveyard wall with the entrance going through the high half-wooden belltower. The site is a very rare example of traditional folk architecture. The church interior was later given extensive rustic paintings with natural themes. The church was built using oak and fir beams. There is a very attractive walking route which leads along





the so-called Klopotovské údolí valley from Slavoňov to Nové Město nad Metují next to the Bohdašínský potok stream.

## SNĚŽNÉ

[www.snezne.net](http://www.snezne.net)



Sněžné lies in the north part of the Orlické Mountains at an elevation from 540 to 738 m. The first written record of the village dates to 1537. There is a chapel built in 1892 at the upper end of the village, consecrated to Our Lady of the Snows. Particularly attractive here for tourists is the large number of traditional wooden cottages and the unfinished Skutina fortification. The former manufactory in building no. 1 is currently the Horalka recreational centre which offers year-round accommodation. A number of botanically fascinating wet, almost boggy, meadows are located near Sněžné. The beautiful surroundings and countryside are ideal for romantic walks.

## STUDNICE

[www.obecstudnicena.cz](http://www.obecstudnicena.cz)



The name of Studnice comes from the spring water well in the middle of the village. The first record of the mediaeval stronghold dates back to 1438, when it was in the ownership of Jan Straka of Nedabylice, a loyal Hussite. The historic stronghold was converted in 1789 into a clergy house in which priest and historian J M Ludvík lived. It was purchased in 1975 from the church administration by Mrs Jarmila Hassan Abdel Wahab, who tried to protect the stronghold. Since 1998, the stronghold has been owned by the village of Studnice and following reconstruction, the council, a library with internet, the '1886 Union of Villages' office and the Vydrýsek mother and child centre in the attic have been based there since 2000. The village of Studnice is formed from the neighbourhoods of Bakov, Řešetova Lhota, Starkoč, Studnice, Třtice, Všeliby and Zblouv.

## VAL

[www.val.cz](http://www.val.cz)

R1361 is given as the year of the first written record of the village of Val. The village lies in the Orlické Mountains foothills at an elevation of 355 m and comprises two neighbourhoods – formerly independent villages – Val and Provoz, separated by Valské údolí valley. The advantage of the village's position is its proximity to towns with rich histories (Dobruška, Opočno, Nové Město nad Metují) and on a route leading to the mountain resort of Olešnice v Orli. h. The most attractive walking destination is Valské údolí. Here you can find Ondřejcův mlýn (Ondřejec's mill) which dates back to the 15th century and where the Ondřejec family did great trade for over 200 years. The valley's attraction is multiplied by other preserved mills, today mainly recreational cottages. There is also a Natural Theatre site here.

Cycle route no. 4325 goes through Valské údolí, and links Dobruška with the Orlické Mountains, but you can also take a cycle trip to nearby Nové Město nad Metují. The valley is a popular place for countryside walks all year round.



## VRŠOVKA

[www.vrsovka.cz](http://www.vrsovka.cz)

The first written record of Vršovka dates back to 1527. It currently has about 100 inhabitants. In 1887, the Volunteer Firefighter Association was founded here, and it remains active today. Another active society here is the hunting society, which has merged with surrounding hunting societies and is named Horka. Vršovka is currently a small but independent village which is still some distance from the

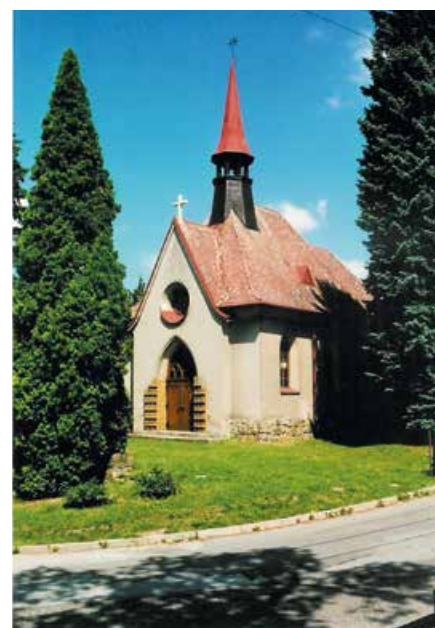


main thoroughfares. Many Vršovka residents, however, are truly appreciative of the fact they live far away from the hustle and bustle, even though basic shopping can only be done from a mobile store which parks here on Tuesdays

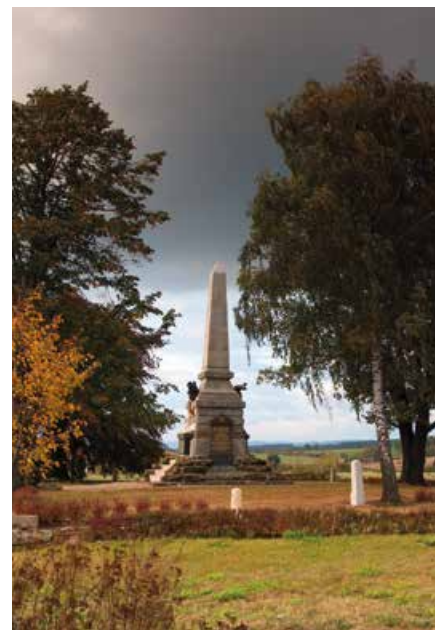
and Thursdays. Vršovka is basically an oasis of tranquillity where you need not worry about traffic or other hallmarks of civilisation.

## VYSOKOV

[www.vysokov.cz](http://www.vysokov.cz)



The village was founded as a settlement on the frontier route that led from the Czech Lands to Prussia. The first record of Vysokov dates back to 1465. Until 1848, the village was part of the Náchod estate, and it is located in the border region west of the city of Náchod. The village is known for its beautiful panoramic views of the Krkonoše and Orlické Mountains. It is part of two microregions, the 1866 Union of Villages and the Novoměstsko Voluntary Union of Villages. Vysokov is a village with rich cultural and community traditions. A highlight of this is the nationwide amateur film show, 'Vysokovský kohout', with international participation. The principal organiser is Osvětová beseda Vysokov (the Vysokov Enlightenment Forum).





# Nové Město nad Metují and the Novoměstsko Region – major cultural and sports events in 2018

## JANUARY

**1. 1. - 30. 1. 2018** – Municipal Museum  
**Christmas in the Museum**  
– Halda family sculptors' nativity scenes  
Exhibition throughout museum.  
[www.muzeum-nmnm.cz](http://www.muzeum-nmnm.cz)

**20. 1. 2018 – 20.00 h.** – Nový Hrádek  
**Hunters' Ball** [www.novy-hradek.cz](http://www.novy-hradek.cz)

**23. 1. 2018 – 18.00 h.** – Municipal Library  
**Talk on Božena Němcová's Babička (The Grandmother)**  
Given by Aleš Roleček.  
[www.knihovnanm.cz](http://www.knihovnanm.cz)

**23. 1. 2018 – 19.00 h.** – Kino 70  
**Šašek nebo politik (Fool or Politician)**  
Play performed by amateur dramatics group Jirásek – Temno from Týniště nad Orlicí.  
[www.mestskyklub.cz](http://www.mestskyklub.cz)

**25. 1. – 11. 3. 2018**  
**Irena Štyrandová's hand-made paper workshop**  
Exhibition in Zázvorka municipal gallery.  
[www.muzeum-nmnm.cz](http://www.muzeum-nmnm.cz)

**26. 1. 2018** – Pyramida school restaurant  
**29th Nové Město Ball**  
Nové Město nad Metují's town ball.  
[www.novemestonm.cz](http://www.novemestonm.cz)

**27. 1. 2018 – 20.00 h.** – Nový Hrádek  
**Sokol Ball**  
[www.novy-hradek.cz](http://www.novy-hradek.cz)

**28. 1. 2018 – 15.00 h.** – sokolovna gym hall  
**Kids' carnival**  
[www.spvnovemesto.cz](http://www.spvnovemesto.cz)

**28. 1. 2018 – 14.00 h.** – Nový Hrádek  
**Kids' carnival**  
[www.novy-hradek.cz](http://www.novy-hradek.cz)

## FEBRUARY

**6. 2. 2018 – 18.00 h.** – Municipal Library  
**Talk on typography**  
Given by Ing. Petr Michal.  
[www.knihovnanm.cz](http://www.knihovnanm.cz)

**8. 2. 2018 – 18.00 h.** – Municipal Library  
**Talk on the Holocaust**  
Given by Věra Vlčková, jointly organised by the Christian Academy.  
[www.knihovnanm.cz](http://www.knihovnanm.cz)

**10. 2. 2018 – 20.00 h.** – Nový Hrádek  
**Fire-fighters' Ball**  
[www.novy-hradek.cz](http://www.novy-hradek.cz)

**10.-11. 2. 2018**  
– Bartoň-Dobenín family castle  
**Valentine wedding exhibition**  
[www.zameknm.cz](http://www.zameknm.cz)

**13. 2. 2018 – 10.00 h.** – Husovo náměstí  
**Little Mummies' parade**  
Children from Pod Výrovem nursery school.

**13. 2. 2018 – 19.00 h.** – Kino 70  
**"Čtení ke kafi" (Reading with Coffee)**  
Divadlo MALÉHRY.  
[www.mestskyklub.cz](http://www.mestskyklub.cz)

**16. 2. 2018 – 10.00 h.** – Kino 70  
**O křišťálovém srdci (The Crystal Heart)**  
Play for children aged 3-11 years old.  
[www.mestskyklub.cz](http://www.mestskyklub.cz)

**18. 2. 2018 – 14.00 h.** – Borová  
**Kids' carnival**  
Kulturní dům Borová.  
[www.borovaunachoda.cz](http://www.borovaunachoda.cz)

**21. 2. 2018 – 18.00 h.** – Municipal Library  
**Kenya in Novels**  
Given by writer and traveller Hana Hindráková.  
[www.knihovnanm.cz](http://www.knihovnanm.cz)

**23. 2. 2018** – Borová  
**Fire-fighters' Ball**  
Kulturní dům Borová.  
[www.borovaunachoda.cz](http://www.borovaunachoda.cz)

## MARCH

**1. 3. 2018 – 18.00 h.** – Municipal Library  
**Valdštejn**  
Talk given by Josef Snětivý.  
[www.knihovnanm.cz](http://www.knihovnanm.cz)

**6. 3. 2018 – 18.00 h.** – Municipal Library  
**Seeking European Pyramids**  
Talk given by Jiří Voňka.  
[www.knihovnanm.cz](http://www.knihovnanm.cz)

**14. 3. 2018 – 18.30 h.** – Municipal Library  
**Concert by Shadde Yadda swing band**  
[www.knihovnanm.cz](http://www.knihovnanm.cz)

**15. 3. – 13. 5. 2018**  
**Stanislav Gaber – pictures**  
Exhibition in Zázvorka municipal gallery.  
[www.muzeum-nmnm.cz](http://www.muzeum-nmnm.cz)

**17. 3. – 2. 4. 2018**  
**Easter at the Museum**  
Exhibition and contest for the most beautiful decorated egg.  
[www.muzeum-nmnm.cz](http://www.muzeum-nmnm.cz)

**20. 3. 2018 – 19.00 h.** – Kino 70  
**FoxO**  
Concert by this electronica/chanson band.  
[www.mestskyklub.cz](http://www.mestskyklub.cz)

**24. 3. 2018** – Bartoň-Dobenín family castle  
**minus123minut concert**  
[www.zameknm.cz](http://www.zameknm.cz)

**24. 3. 2018 – 20.00 h.** – ORELNA Šonov  
**Sportovní šibřinky ball**  
[www.provodovsonov.cz](http://www.provodovsonov.cz)

## APRIL

**April 2018** – Kino 70  
**POHODA**  
31st annual Folk and Country Music Festival.  
[www.pohodanm.cz](http://www.pohodanm.cz)

**14. 4. 2018 – 8.30**  
– Malecí elementary school  
**Open tournament in Ring**  
[www.spvnovemesto.cz](http://www.spvnovemesto.cz)

**21. 4. 2018** – Husovo náměstí  
**Opening the town gates**  
Programme launching the tourist season and the castle market.  
[www.mestskyklub.cz](http://www.mestskyklub.cz)

**21. 4. 2018 – 9.30-17.00 h.**  
**Castle market**  
Castle courtyard and access paths  
[www.zameknm.cz](http://www.zameknm.cz)

**21. 4. 2018** – Bartoň-Dobenín family castle  
**Castellan tours of castle garden and granary**  
[www.zameknm.cz](http://www.zameknm.cz)

**21. 4. 2018 – 9.00-17.00 h.**  
– Pod Žebrovkou gallery  
**Model train exhibition**  
[www.zameknm.cz](http://www.zameknm.cz)

**21. 4. 2018 – 10.00 h.** – sokolovna gym hall  
**Raz, dva, tři (Ready, Steady, Go!)**  
– dance competition  
[www.ddmstonozkanm.cz](http://www.ddmstonozkanm.cz)

**22. 4. 2018 – 9.00-16.00 h.**  
– Pod Žebrovkou gallery  
**Model train exhibition**  
[www.zameknm.cz](http://www.zameknm.cz)

**22. 4. 2018 – 14.00 h.** – Borová  
**Discussion over chronicle**  
Kulturní dům Borová.  
[www.borovaunachoda.cz](http://www.borovaunachoda.cz)

**22. 4. 2018 – 19.00 h.** – Kino 70  
**V Paříži bych tě nečekala, tatínku (Ma fille travaille à Paris)**  
Harlekýn theatre agency.  
[www.mestskyklub.cz](http://www.mestskyklub.cz)

**23. 4. – 27. 4.**  
**Museum week for schools**  
Unconventional historical tours with educational themes.  
[www.muzeum-nmnm.cz](http://www.muzeum-nmnm.cz)

**28. 4. 2018 – 10.00 h.** – Nový Hrádek  
**3rd Nový Moto Hrádek**  
[www.novy-hradek.cz](http://www.novy-hradek.cz)



**30. 4. 2018 – 18.00 h.** – Municipal Library  
**Witches in the Library**  
[www.knihovnanm.cz](http://www.knihovnanm.cz)

**30. 4. 2018** – DDM Stonožka  
**Witching afternoon**  
[www.ddmstonozkanm.cz](http://www.ddmstonozkanm.cz)

## MAY

**May**  
**Smetana Days**  
35th annual festival.  
[www.mestskyklub.cz](http://www.mestskyklub.cz)

**May** – sokolovna gym hall  
**Kácov Mixed Choir spring concert**  
Kost concert by Hradec Králové children's choir, Jitro, led by Prof. Skopal.  
[www.mestskyklub.cz](http://www.mestskyklub.cz)

**May** – Hotel Rajska zahrada  
**Nové Město Watch Days**  
Event for lovers of watch-making and watches.  
[www.novemestonm.cz](http://www.novemestonm.cz)

**7. 5. 2018** – Nové Město nad Metují  
**Lamp parade with fireworks**  
Acts of remembrance at the monument to the fallen on Liberation Day.  
[www.mestskyklub.cz](http://www.mestskyklub.cz)

**7. 5. – 30. 9. 2018**  
**Puppet world**  
Exhibition in the Municipal Museum.  
[www.muzeum-nmnm.cz](http://www.muzeum-nmnm.cz)

**9. 5. 2018 – 18.00 h.** – Municipal Library  
**Night of books**  
[www.knihovnanm.cz](http://www.knihovnanm.cz)

**12. 5. 2018 – 8.00 h.** – Nový Hrádek  
**Hrádouská vařečka (Hradec Wooden Spoon) Walk**  
[www.novy-hradek.cz](http://www.novy-hradek.cz)

**13. 5. 2018 – 9.00 h.**  
**VoCe Run for NONA 92**  
Charity run for kids, young people and adults. Start at Krčín elementary school, finish at Hotel Rajska zahrada.  
[www.volejbal-nm.cz](http://www.volejbal-nm.cz)

**13. 5. 2018** – Gen. Klapálek stadium  
**Strolling**  
7th annual pram race  
[www.mestskyklub.cz](http://www.mestskyklub.cz)

**17. 5. – 16. 6. 2018**  
**Exhibition of artists from our partner town of Hilden, Germany**  
Exhibition in Zázvorka municipal gallery.  
[www.muzeum-nmnm.cz](http://www.muzeum-nmnm.cz)

**18. 5. 2018 – 15.30-19.00 h.**  
– sokolovna gym hall  
**Tajný výlet (Secret Trip)**  
[www.spvnovemesto.cz](http://www.spvnovemesto.cz)

**18. 5. 2018 – 9.00-17.00 h.**  
**International Museums and Galleries Day**  
Free entrance to buildings.  
[www.muzeum-nmnm.cz](http://www.muzeum-nmnm.cz)

**19. 5. 2018**  
**25th gathering of town natives and friends**  
[www.mestskyklub.cz](http://www.mestskyklub.cz)

**26. 5. 2018 – 10.00-18.00 h.**  
– Bartoň-Dobenín family castle  
**Food Art Festival**  
[www.zameknm.cz](http://www.zameknm.cz)

**26. 5. 2018** – Borová  
**Borová 50km, Kłodzko borderland Walk.**  
[www.borovaunachoda.cz](http://www.borovaunachoda.cz)

**31. 5. – 2. 6. 2018** – Municipal Library  
**Patchwork exhibition**  
Organised by the Orlický/Krkonoše patchwork club.  
[www.knihovnanm.cz](http://www.knihovnanm.cz)

## JUNE

**June** – Spolkový dům basement  
**Dragons**  
Exhibition by children from Na Františku nursery school.  
[www.msfrantisek.cz](http://www.msfrantisek.cz)

**June** – Borová  
**Children's Day**  
TJ Sokol Borová sports field.  
[www.borovaunachoda.cz](http://www.borovaunachoda.cz)

**1. 6. 2018** – DDM Stonožka  
**Children's Day at Stonožka**  
[www.ddmstonozkanm.cz](http://www.ddmstonozkanm.cz)

**1. 6. – 29. 7. 2018** – Pod Žebrovkou gallery  
**Czech Crown Jewels exhibition**  
[www.zameknm.cz](http://www.zameknm.cz)

**5. 6. 2018 – 19.00 h.** – Kino 70  
**Tchýně na zabít (Mother-in-Law to Kill for)**  
Theatre performance.  
[www.mestskyklub.cz](http://www.mestskyklub.cz)

**16. 6. 2018** – Nový Hrádek  
**Oblastní sokolský slet (regional gymnastics contest)**  
[www.novy-hradek.cz](http://www.novy-hradek.cz)

**21. 6. 2018 – 16.30 h.**  
**Stepík Academy**  
Jana Michelová exercise centre.  
[www.stepik.eu](http://www.stepik.eu)

**21. 6. – 19. 9. 2018**  
**Karel Vondráček** – selection of works  
Exhibition in Zázvorka municipal gallery.  
[www.muzeum-nmnm.cz](http://www.muzeum-nmnm.cz)

**28. 6. – 30. 9. 2018**  
**Zmatené peníze (Confused Money)**  
Exhibition in Zázvorka municipal gallery.  
[www.muzeum-nmnm.cz](http://www.muzeum-nmnm.cz)

**30. 6. 2018** – Bartoň-Dobenín family castle  
**U nás na zámku (Here at the Castle)**  
Fifth year of this popular family mini-festival including concerts, theatre, picnic and much more besides.  
[www.unasnazamku.cz](http://www.unasnazamku.cz)

**30. 6. 2018 – 18.00 h.** – Přibyslav  
**Summer Fire-fighters' Ball**  
The event takes place at the sports field next to Přibyslav council building.

## JULY

**July** – Spolkový dům basement  
**Dragons**  
Exhibition by children from Na Františku nursery school.  
[www.msfrantisek.cz](http://www.msfrantisek.cz)

**July** – Nové Město nad Metují castle  
**Festival of Experiences**  
Special tours of exteriors with Dušan Jurkovič – always on Wednesdays.  
[www.zameknm.cz](http://www.zameknm.cz)

**July** – Husovo náměstí  
**Summer concerts**  
[www.mestskyklub.cz](http://www.mestskyklub.cz)

**July** – Bartoň-Dobenín family castle  
**Photography exhibition**  
[www.zameknm.cz](http://www.zameknm.cz)

**1. – 7. 7. 2018** – General Klapálek stadium  
**World Ranking Tournament**  
World para-archery ranking tournament for disabled athletes.  
[www.sportklub.cz](http://www.sportklub.cz)

**13.-15. 7. 2018**  
– Bartoň-Dobenín family castle  
**Exhibition of cacti, succulents and carnivorous plants**  
[www.zameknm.cz](http://www.zameknm.cz)

**14. 7. 2018 – 9.00-17.00 h.**  
**Traditional Czech market**  
This event is taking place within the museum's outdoor areas.  
[www.muzeum-nmnm.cz](http://www.muzeum-nmnm.cz)

**21. 7. 2018** – General Klapálek stadium  
**Nové Město nad Metují Grand Prix international athletics meeting**  
Prestigious athletics contest.  
[www.sportklub.cz](http://www.sportklub.cz)

**25. 7. 2018** – Bartoň-Dobenín family castle  
**Evening castle tour**  
[www.zameknm.cz](http://www.zameknm.cz)

**28. 7. – 5. 8. 2018**  
– Sněžné v Orlických horách  
**Academic Weeks**  
[www.akademicketydny.cz](http://www.akademicketydny.cz)



**AUGUST**

**August** – Nové Město nad Metují castle  
**Festival of Experiences**  
 Special tours of exteriors with Dušan Jurkovič – always on Wednesdays.  
[www.zameknm.cz](http://www.zameknm.cz)

**August** – Husovo náměstí  
**Summer concerts**  
[www.mestskyklub.cz](http://www.mestskyklub.cz)

**August** – Bartoň-Dobenín family castle  
**Photography exhibition**  
[www.zameknm.cz](http://www.zameknm.cz)

**4. 8. 2018** – Municipal museum  
**Night at the Museum**  
 with Jan Černický of Kácov  
 Night-time museum tours with programme.  
[www.muzeum-nmnm.cz](http://www.muzeum-nmnm.cz)

**18. 8. 2018** – Borová  
**Summer Christmas**  
 At Borová kulturní dům.  
[www.borovaunachoda.cz](http://www.borovaunachoda.cz)

**25. 8. 2018 – 19.00 h.**  
 – Bartoň-Dobenín family castle  
**Night at the Castle**  
[www.zameknm.cz](http://www.zameknm.cz)

**SEPTEMBER**

**September** – Bartoň-Dobenín family castle  
**Photography exhibition**  
[www.zameknm.cz](http://www.zameknm.cz)

**September** – Borová  
**Posvícení festival**  
 U Kačenky inn  
[www.borovaunachoda.cz](http://www.borovaunachoda.cz)

**1. 9. 2018** – Nový Hrádek  
**Mayor's Cup fire fighting contest**  
[www.novy-hradek.cz](http://www.novy-hradek.cz)

**8. 9. 2018** – Husovo náměstí  
**European Heritage Day**  
 Entry to selected sites free of charge, parade through town, extensive cultural programme.  
[www.muzeum-nmnm.cz](http://www.muzeum-nmnm.cz)

**8. 9. 2018** – Bartoň-Dobenín family castle  
**Castle market**  
[www.zameknm.cz](http://www.zameknm.cz)

**8. 9. 2018** – Bartoň-Dobenín family castle  
**Castellan tours of castle garden and granary**  
[www.zameknm.cz](http://www.zameknm.cz)

**13. 9. – 10. 10. 2018**  
**Stanislav Kulda – drawings**  
 Exhibition in Zázvorka municipal gallery.  
[www.muzeum-nmnm.cz](http://www.muzeum-nmnm.cz)

**22. 9. 2018 – 8.00 h.** – ORELNA Šonov  
**“Šonovská 20” parade**  
[www.provodovsonov.cz](http://www.provodovsonov.cz)

**23. – 29. 9. 2018** – KINO 70  
**40th Czech Film Comedy Festival**  
 Traditional film comedy show.  
 Organised by Městský klub.  
[www.festivalkomedie.cz](http://www.festivalkomedie.cz)

**OCTOBER**

**October** – Church of the Holy Trinity  
**22nd Orlické hory/Klodzko organ festival**  
[www.mestskyklub.cz](http://www.mestskyklub.cz)

**October** – Bartoň-Dobenín family castle  
**Concert as part of the F L Věk International Music Festival**  
[www.zameknm.cz](http://www.zameknm.cz)

**1. 10. 2018 – 9.00-17.00 h.**  
**International Day of Older Persons**  
 Guided tours of the museum free of charge for senior citizens.  
[www.muzeum-nmnm.cz](http://www.muzeum-nmnm.cz)

**2. 10. 2018 – 19.00 h.** – Kino 70  
**Hvězdné manýry (Suite Surrender)**  
 Háta group, theatre show.  
[www.mestskyklub.cz](http://www.mestskyklub.cz)

**3. 10. 2018 – 18.00 h.**  
**October 1918**  
 Talk by Pavel Kosatík, author of the České století (Czech Century) series.  
[www.knihovnanm.cz](http://www.knihovnanm.cz)

**6. 10. 2018 – 8.45 h.**  
 – sokolovna gym hall  
**Metuje Prize**  
 Running race.  
[www.sportklub.cz](http://www.sportklub.cz)

**28. 10. 2018 – 17.00 h.**  
 – Bartoň-Dobenín family castle  
**Gala evening celebrating the anniversary of the founding of an independent Czechoslovak state**  
[www.mestskyklub.cz](http://www.mestskyklub.cz)

**NOVEMBER**

**15. 11. 2018 – 13. 1. 2019**  
**Vojtěch Sedláček – graphics, drawings**  
 Exhibition in Zázvorka municipal gallery.  
[www.muzeum-nmnm.cz](http://www.muzeum-nmnm.cz)

**29. 11. 2018 – 18.00 h.**  
**Advent Night at the Museum**  
 Museum tours with a special programme.  
[www.muzeum-nmnm.cz](http://www.muzeum-nmnm.cz)

**30. 11. 2018 – 1. 2. 2018**  
**Nativity Scenes and Christmas at the Museum**  
 Exhibition throughout museum.  
[www.muzeum-nmnm.cz](http://www.muzeum-nmnm.cz)

**DECEMBER**

**December** – sokolovna gym hall  
**Kácov Mixed Choir Christmas concert**  
[www.mestskyklub.cz](http://www.mestskyklub.cz)

**Prosinec** – terasa Kina 70  
**Nové Město Christmas Salad**  
 Contest for best Christmas salad.  
[www.mestskyklub.cz](http://www.mestskyklub.cz)

**December** – Bartoň-Dobenín family castle  
**Sale of Christmas trees**  
[www.zameknm.cz](http://www.zameknm.cz)

**December** – Bartoň-Dobenín family castle  
**Christmas castle tours**  
[www.zameknm.cz](http://www.zameknm.cz)

**December** – Borová  
**Advent concert**  
 Borová chapel.  
[www.borovaunachoda.cz](http://www.borovaunachoda.cz)

**1. 12. 2018 – 16.30 h.** – Husovo náměstí  
**Lighting of the Christmas tree**  
[www.mestskyklub.cz](http://www.mestskyklub.cz)

**2. 12. 2018 – 15.30 h.** – sokolovna gym hall  
**St Nicholas party**  
[www.spnovemesto.cz](http://www.spnovemesto.cz)

**2. 12. 2018 – 14.00 h.** – ORELNA Šonov  
**St Nicholas party**  
[www.provodovsonov.cz](http://www.provodovsonov.cz)

**2. 12. 2018** – Borová  
**Lighting of the Christmas tree**  
 Around Borová chapel.  
[www.borovaunachoda.cz](http://www.borovaunachoda.cz)

**6.-9. 12. 2018**  
 – Bartoň-Dobenín family castle  
**Christmas with Flowers**  
 Traditional Christmas exhibition within the castle.  
[www.novemestonm.cz](http://www.novemestonm.cz)

**7. 12. 2018** – Bartoň-Dobenín family castle  
**Charity advent concert**  
[www.zameknm.cz](http://www.zameknm.cz)

**8. 12. 2018 – 16.30 h.** – Husovo náměstí  
**Carols at the Christmas tree**  
 Lighting of 2nd advent lamp.  
[www.mestskyklub.cz](http://www.mestskyklub.cz)

**15. 12. 2018 – 16.30 h.** – Husovo náměstí  
**Carols at the Christmas tree**  
[www.mestskyklub.cz](http://www.mestskyklub.cz)

**22. 12. 2018 – 16.30 h.** – Husovo náměstí  
**Carols at the Christmas tree**  
[www.mestskyklub.cz](http://www.mestskyklub.cz)

**31. 12. 2018** – Husovo náměstí  
**Children's New Year, or New Year's Eve family afternoon**  
 Fun family programme for families with kids, ending with fireworks.  
[www.novemestonm.cz](http://www.novemestonm.cz)



# Services in the Novoměstsko Region

## ■ Gym & Wellness

### Daniela Hercíková

massages  
Nádražní 362  
tel. 777 630 560

### EDEN relax studio

gym, massages, cosmetics,  
manicures, pedicures  
Na Bořetíně 125  
tel. 777 630 560, [www.eden-relax.cz](http://www.eden-relax.cz)

### PharmaDr. Petra Tichá

massages  
Na Františku 648  
tel. 732 760 957, [www.masaze-petrajulie.cz](http://www.masaze-petrajulie.cz)

### Thai massages in Rajská zahrada

massages  
Komenského 72  
tel. 604 972 535, [www.thaj-masaze.cz](http://www.thaj-masaze.cz)

### Wellness hotel Rajská zahrada

gym, sauna, wellness  
Komenského 70  
tel. 773 777 773, [www.hotelrajskazahrada.cz](http://www.hotelrajskazahrada.cz)

## ■ Sports centres

### Bowling Na Rychtě

4 bowling alleys, billiards, table football  
Komenského 34, tel. 725 970 918

### Centrum Najáda, s. r. o.

covered swimming pool, sauna, massages  
28. října 415  
tel. 608 146 654, [www.svet-deti.cz](http://www.svet-deti.cz)

### Pohybové centrum Jany Michelové

aerobics, dance  
Malecí 585  
tel. 606 181 148, [www.fitnessjana.cz](http://www.fitnessjana.cz)

### Sportovní centrum

gym, spinning, squash, tennis, badminton  
28. října 414  
tel. 775 770 700, [www.sportovnicentrum.cz](http://www.sportovnicentrum.cz)

### Sports club - General Klapálek stadium

football pitch, tennis and volleyball court,  
athletics track, archery range, outdoor table tennis, pétanque, playground  
28. října 943  
tel. 491 474 270, [www.sportklub.cz](http://www.sportklub.cz)

### TJ Sokol Krčín

football pitch, tennis, volleyball and football artificial surface tennis courts  
Žižkovo náměstí 63  
tel. 737 975 698

### TJ Sokol Nové Město nad Metují

football pitch, volleyball and football tennis court, outdoor exercise equipment  
Přibyslavská 63  
tel. 737 975 698  
[www.sokol-novemestonm.webnode.cz](http://www.sokol-novemestonm.webnode.cz)

### TJ Spartak – Zimní stadion

public skating, loan of ice rink  
Pod Lipami 459  
tel. 603 897 490, [www.tjspartak.cz](http://www.tjspartak.cz)

## ■ Outdoor activities

### Aeroklub Nové Město nad Metují

sightseeing flights, tandem parachute jumps, Nahořanská 483  
tel. 491 474 424, [www.aknm.cz](http://www.aknm.cz)

### HIS Nové Město nad Metují

natural rockclimbing area  
Sports routes classification II – VIII (7–15 m), seating, children's play area  
! climbing at your own risk!  
Na Popluží on the Metuje river (getting there described on www)  
tel. 604 821 625, [www.hovrch.info](http://www.hovrch.info)

### Půjčovna lodí Metuje boat rentals

kayak and Samba canoe rentals  
Pod Výrovem 1045  
tel. 732 638 330, [www.pujcovnametuje.cz](http://www.pujcovnametuje.cz)

### Aeroklub Vysokov/Náchod

private area for sports aircraft take-off and landing, model aircraft club  
Vysokov 165, Náchod  
tel. 603 882 300, [www.akvysokov.cz](http://www.akvysokov.cz)

### Deer farm at Na Radosti guest house

Slavětín nad Metují 78, Slavětín nad Metují  
tel. 604 998 387, [www.naradosti.cz](http://www.naradosti.cz)

### JK Ranč Lipí ranch

horse and pony riding and trekking  
Lipí-Bůček, Náchod  
tel. 604 235 682, [www.ranclipi.cz](http://www.ranclipi.cz)

### JK Ranch Slavoňov

horse riding and trekking, horse training, show-jumping practice  
Slavoňov 4, Slavoňov  
[www.ranch-slavonov.wbs.cz](http://www.ranch-slavonov.wbs.cz)  
[kone.slavonov@seznam.cz](mailto:kone.slavonov@seznam.cz)

### Koně Provodov-Šonov horses

horse riding and trekking, Friesian horses, horse and carriage trips  
Provodov-Šonov 47, Provodov-Šonov  
tel. 773 644 362

## ■ nearby swimming areas and water bodies

### Broumar fish pond

swimming – 50 m swimming pool and kid's pool, campsite at pond  
U Broumaru 555, Opočno  
tel. 494 668 309, [www.broumar.cz](http://www.broumar.cz)

### Bystré bathing area

countryside reservoir, refreshments  
! swimming at your own risk!  
Bystré, on the Bystré – Janov road  
tel. 777 650 925, [www.obecbystre.cz](http://www.obecbystre.cz)

### Dobruška swimming pool

50 m swimming pool and kid's pool  
Mírová 819, Dobruška  
tel. 777 418 798, [bazen.mestodobruska.cz](http://bazen.mestodobruska.cz)

### Jaroměř swimming pool

50 m swimming pool, 22 m kid's pool with slide and paddling pool  
Karla Lánského, Jaroměř  
tel. 491 812 787, [www.bazenjaromer.cz](http://www.bazenjaromer.cz)

### Jiráskovo koupaliště Náchod

50 m swimming pool, kid's pool with slide and paddling pool  
Kostelecká 1174, Náchod  
tel. 491 426 355, [www.sportnachod.cz](http://www.sportnachod.cz)

### Přibyslav swimming pool

pool built by local residents  
Přibyslav  
tel. 702 125 544, [www.obecpribyslav.cz](http://www.obecpribyslav.cz)

### Rozkoš reservoir

fishing, water sports, bathing, campsites accessible from Nové Město nad Metují heading towards Jaroměř – near the village of Nahořany accessible from České skalice

### Zákraví fish pond

outdoor swimming in a quiet location  
obec Zákraví

## ■ Nearby ski centres and lifts

### Ski centrum Deštné v Orlických Horách

7 surface lifts and and aerial lift with 6 pistes  
Deštné v Orlických horách  
tel. 492 601 601, [www.skicentrumdestne.cz](http://www.skicentrumdestne.cz)

### Cross-country ski routes around Deštné v Orlických horách

a popular starting point is the mountain pass of Šerlich (stop Deštné v O. h., Šerlich, Masarykova chata)

### Jamrozowa Polana cross-country ski routes (Poland)

Lit and maintained circuits from 1 km to 12.5 km, sports equipment hire  
Jamrozowa Polana, Duszniki Zdrój, Polsko  
[www.jamrozowa.eu](http://www.jamrozowa.eu)

### Kačenčina sjezdovka at Juráška chalet

2 surface lifts and 3 pistes  
Horská chata Juráška  
Olešnice v Orlických horách  
tel. 604 724 649, [www.sjezdovka-olesnice.cz](http://www.sjezdovka-olesnice.cz)

### Panská stráň ski centre

1 surface lift and 2 pistes  
TJ Sokol Nový Hrádek  
Nový Hrádek  
tel. 776 582 103, [www.lyzovani.novy-hradek.cz](http://www.lyzovani.novy-hradek.cz)

### Start Deštné surface lift

Šerlišský mlýn piste in Deštné  
Deštné v Orlických Horách  
tel. 734 370 889, [www.skidestne.cz](http://www.skidestne.cz)



Na Rybníce

Luštinec

Luštinec

Svatojánské

Krčín

U Řičky

Na Budíně

Měřítko: (m)

0 100 200 300 400 500

## LEGENDA

- |   |   |
|---|---|
|  informační centrum – Information center   |  poliklinika, první pomoc – Clinic |
|  hotel, pension, ubytování – Accommodation |  lékárna – Pharmacy                |
|  restaurace, bufet – Restaurant            |  nádraží – Railway station         |
|  kavárna, občerstvení – Café               |  autobusové nádraží – Bus station  |
|  banka, bankomat – Bank, ATM               |  čerpací stanice – Gas station     |
|  směnárna – Exchange                       |  parkoviště – Parking              |
|  pošta – Post office                       |  supermarket – Supermarket         |
|  veřejné toalety – Public toilet           |  sportoviště – Sports ground       |





### Hartman ski centre

1 T-bar lift and two kid's lifts for 3 pistes  
Olešnice v Orlických horách  
tel. 702 370 670, [www.skihartman.cz](http://www.skihartman.cz)

### Olešnice v Orlických horách ski centre

4 surface lifts and 6 pistes  
Olešnice v Orlických horách 108  
tel. 731 419 394, [www.skiollesnice.cz](http://www.skiollesnice.cz)

### Sedloňov ski centre

2 surface lifts and 3 pistes  
Sedloňov 155  
tel. 777 494 706, [www.skisedlonov.cz](http://www.skisedlonov.cz)

### Zieleniec ski centre (Poland)

3 aerial lifts, 25 surface lifts and 10 lit pistes  
about 30 km from Nové Město nad Metují  
Zieleniec 72, Duszniki Zdrój, Polsko  
[zieleniec.pl](http://zieleniec.pl)

### ■ Medical services in Nové Město nad Metují:

#### General practitioners for children and adolescents

##### MUDr. Kmoníčková Hana

Boženy Němcové 121  
tel. 491 471 492

##### MUDr. Neumannová Pavlína

Komenského 48  
tel. 491 472 429

##### MUDr. Zavřel Eduard

Malecí 2150  
tel. 491 471 507

### First aid medical services for children:

#### Oblastní nemocnice Náchod, a.s.

Purkyňova 446  
Náchod  
tel. 841 155 155

### General practitioners for adults

##### MUDr. Hanka Václav

T. G. Masaryka 197  
tel. 491 471 718

##### MUDr. Javorský Lukáš

T. G. Masaryka 197  
tel. 491 421 417

##### MUDr. Pištora Jiří

T. G. Masaryka 197  
tel. 491 470 507

##### MUDr. Suchá Magdalena

T. G. Masaryka 197  
tel. 491 428 038

##### MUDr. Štětinová Gabriela

Komenského 48  
tel. 491 472 975

##### MUDr. Tichý Ladislav

Komenského 48  
tel. 491 471 738

##### MUDr. Herzig Bedřich Surgical A&E

Malecí 2150  
tel. 491 473 218

### First aid medical services for adults

#### Oblastní nemocnice Náchod a.s.

Purkyňova 446  
Náchod  
tel. 841 155 155

### Dentists

##### MUDr. Filipová Blanka

Komenského 10  
tel. 491 472 721

##### MUDr. Hulánová Blanka

Smetanova 144  
tel. 491 428 502

##### MUDr. Jirmanová Miroslava

Komenského 48  
tel. 491 472 947

##### MUDr. Juran Petr

Komenského 10  
tel. 491 472 721

##### MUDr. Kučerová Michaela

Komenského 72  
tel. 491 472 924

##### MUDr. Matoušová Hana

Komenského 134  
tel. 491 470 566

##### MUDr. Šeda Lubomír

Komenského 48  
tel. 491 472 946

##### MUDr. Pištora Eliška

Komenského 72  
tel. 491 472 923

##### MUDr. Ságlová Simona

Školní 1000  
tel. 491 520 373

### first aid medical services

#### DENTISTRY

current information available at:  
[www.novemestonm.cz/obcan/socialni-oblast-a-zdravotnictvi/lekarska-sluzba-prvni-pomoci-stomatologie/](http://www.novemestonm.cz/obcan/socialni-oblast-a-zdravotnictvi/lekarska-sluzba-prvni-pomoci-stomatologie/)

### ■ Veterinary surgeons

#### MVDr. Věra Andršová

– MVDr. Anna Dresslerová

Náchodská 424  
tel. 739 803 364, [www.veterinanm.cz](http://www.veterinanm.cz)

#### MVDr. Ludmila Brandejsová

Na Kopci 456  
tel. 776 659 170

#### Stanislav Pošta Veterinary A&E

Nádražní 371  
tel. 603 442 323

### ■ Car repairs and service

#### Autodílna Brandejš

Na Táboře 1155  
tel. 491 471 543

### AUTOSERVIS – Petr Jirounek

Na Táboře 1107  
tel. 732 289 643, [www.autoservis-jirounek.cz](http://www.autoservis-jirounek.cz)

### Kamil Vošlajer

Krátká 490  
tel. 777 140 902

### Pneu-Truněček

Havlíčková 409  
tel. 606 606 654, [www.t-pneu.cz](http://www.t-pneu.cz)

### Prívěsy Trojan

Autodílna Trojan  
Českých legií 5  
tel. 603 820 946, [www.privesy.cz](http://www.privesy.cz)

### Radim Mach

Nerudova 155  
tel. 603 181 670, [www.rtm-motorsport.wbs.cz](http://www.rtm-motorsport.wbs.cz)

### Tomáš Róth (tyre service)

T. G. Masaryka 169  
tel. 777 871 638

### Autoservis Roubal

Bohuslavice 167  
Bohuslavice  
tel. 777 964 205

### Autoslužby Vik

24/7 towing service  
Provodov 51, Provodov-Šonov  
tel. 608 977 517, [www.autoslužbyvik.cz](http://www.autoslužbyvik.cz)

### Autodílna Jiří Taclík

Studnice u Náchoda 120, Studnice  
tel. 603 343 924  
[www.sweb.cz/autodilnataclik](http://www.sweb.cz/autodilnataclik)

### ■ Banks and ATMs

#### Česká spořitelna (bank, ATM)

Komenského 56  
tel. 956 736 280

#### ČSOB (banka, bankomat)

Komenského 72  
tel. 491 477 411

#### GE Money Bank (ATM)

T. G. Masaryka 47

#### Komerční banka (bank, ATM)

Komenského 54  
tel. 955 570 381

#### UniCredit Banka (ATM)

T. G. Masaryka 64

### ■ Filling stations

#### Arriva, a.s.

Náchodská 485  
tel. 721 288 352

#### Benzína, s.r.o.

T. G. Masaryka 1425  
tel. 491 472 864, [www.benzina.cz](http://www.benzina.cz)

#### SAB – Trafo, s.r.o. – LPG

Nahořanská 414  
tel. 491 472 055, [www.sabtrafo.cz](http://www.sabtrafo.cz)



**Beka - Náchod – Vysokov filling station**

Vysokov 21, Vysokov  
tel. 777 177 444, [www.beka-cs.cz](http://www.beka-cs.cz)

**DAVA Rohenice, s. r. o.**

Rohenice 75, Rohenice

**Impro**

Halínská, Nové Město nad Metují - Spy  
tel. 491 470 352, [odimpro.cz](http://odimpro.cz)

**Tank ONO**

Vysokov 109, Vysokov  
tel. 727 983 672, [www.tank-ono.cz](http://www.tank-ono.cz)

**Other nearby filling stations:**

**Benzina Dobruška**

**Benzina Náchod**

**Shell Náchod**

**■ Hairdressers****Anna Smolová**

women, men, children  
Nová 443  
tel. 776 606 242

**Leja hairdressing salon**

women, men, children  
Komenského 73  
tel. 777 117 856, [www.salonleja.cz](http://www.salonleja.cz)

**Eliška Kroupová hairdressers**

women, men, children  
T. G. Masaryka 47  
tel. 775 110 953

**KADEŘNICTVÍ HANA**

Nerudova 330  
tel. 604 104 715

**U Bílé vrány hairdressers**

Komenského 153  
tel. 491 472 267  
[trendhair3000.webnode.cz](http://trendhair3000.webnode.cz)

**Lenka Dynterová**

women, men, children  
Českých legií 84  
tel. 603 894 634

**Adam a Eva salon**

women, men, children  
T. G. Masaryka 169  
tel. 491 473 223

**Salon M & M**

T. G. Masaryka 47  
tel. 491 474 442

**Fresh-hair design**

Záhumská 455  
České Meziříčí  
tel. 607 854 050

**Adel hair salon**

Osvobození 188  
České Meziříčí  
tel. 777 786 118

**Na kovárně hairdressers**

Osvobození 322  
České Meziříčí  
tel. 721 927 442

**Šiklová Jana**

Záhumská 445, České Meziříčí  
tel. 604 475 245

**Vojnarová Barbora**

Záhumská 445, České Meziříčí  
tel. 736 769 688

**Renata Jindrová**

women, men, children  
Bohuslavice 3, Bohuslavice  
tel. 491 472 267

**■ Cinemas****Kino 70**

Boženy Němcové 720  
tel. 491 474 034  
[www.mestskyklub.cz/kino70/index.html](http://www.mestskyklub.cz/kino70/index.html)

**■ Library****Municipal Library**

loan of books, cultural and social events,  
public internet  
Komenského 30  
tel. 491 470 247

**■ Pharmacies****Dr. Max**

T. G. Masaryka 46  
tel. 491 474 017

**U Černého orla pharmacy**

T. G. Masaryka 197  
tel. 491 431 276

**Primula pharmacy**

Záhumského 445, České Meziříčí  
tel. 494 661 285

**Open at weekends**

Dr. Max (Kaufland)  
Polská 379, Náchod-Běloves  
tel. 491 520 090

**■ Opticians****Optika Metuje**

T. G. Masaryka 391  
tel. 732 702 669, [www.optikametuje.cz](http://www.optikametuje.cz)

**Vojtěch Rydlo**

Komenského 133  
tel. 491 471 127

**■ Post offices****Česká pošta Nové Město nad Metují 1**

náměstí Republiky 6  
tel. 491 470 425

**Česká pošta Nové Město nad Metují 3**

1. máje 100  
tel. 491 470 961

**Česká pošta Bohuslavice nad Metují**

Bohuslavice nad Metují 175  
tel. 491 470 951

**Česká pošta Česká Čermná**

Česká Čermná 33  
tel. 491 431 691

**Česká pošta České Meziříčí**

Záhumská 445, České Meziříčí  
tel. 494 661 991

**Česká pošta Nahořany**

Nahořany 76  
tel. 491 470 485

**Česká pošta Nový Hrádek**

Rokolská 123, Nový Hrádek  
tel. 491 478 991

**Česká pošta Ohnišov**

Ohnišov 172  
tel. 494 655 530

**Česká pošta Olešnice v Orlických horách**

Olešnice v Orlických horách 5  
tel. 494 660 981

**Česká pošta Provodov-Šonov**

Šonov u Nového Města nad Metují 170  
Provodov-Šonov  
tel. 491 426 808

**Česká pošta Studnice**

Studnice 75  
tel. 491 435 265

**■ Groceries and supermarkets****Coop –Tuty**

groceries, mixed goods  
Nahořanská 60  
tel. 491 470 024

**Hradecká pekárna**

sale of bread and baked goods  
T. G. Masaryka 391  
tel. 739 533 266

**Ivana Tencarová**

fruit and vegetables, sweets  
Husovo náměstí 1242  
tel. 491 474 005

**Luděk Hojný**

fruit and vegetables  
T. G. Masaryka  
tel. 491 474 950

**Pekařství U Kubička**

bread and rolls, essential foods  
Komenského 394  
tel. 491 472 683

**Penny market**

supermarket  
T. G. Masaryka 2002  
tel. 281 018 111, [www.penny.cz](http://www.penny.cz)

**Řeznictví Jirman**

butchers  
Komenského 116  
tel. 777 203 204, [www.masojirman.cz](http://www.masojirman.cz)

**Řeznictví U Draka**

butchers  
Komenského 25  
tel. 605 482 485

### Stodola

farmer's store  
Komenského 73  
tel. 774 367 750, [www.e-stodola.cz](http://www.e-stodola.cz)

### Supermarket Albert

supermarket  
T. G. Masaryka 2001  
tel. 800 402 402, [www.albert.cz](http://www.albert.cz)

### Verner potraviny

groceries, mixed goods (6 shops)  
Dukelská 662, tel. 491 470 575  
Havlíčková 189, tel. 491 470 413  
Husovo náměstí 1240, tel. 491 470 423  
Komenského 23, tel. 491 470 433  
T. G. Masaryka 43, tel. 491 470 695  
Malecí 578, tel. 491 470 443  
[www.poverner.cz](http://www.poverner.cz)

### Koloniál U Marvalů

mixed goods  
Bačetín 101, Bačetín  
tel. 494 665 657

### Konzum Coop

groceries  
Bohuslavice 382, Bohuslavice nad Metují  
tel. 491 814 602

### Marta, spol. s r. o.

bread and rolls  
Bohuslavice 201, Bohuslavice nad Metují  
tel. 776 351 272

### Koloniál U Lněničků

mixed goods  
Česká Čermná

### Potraviny – APIS

groceries  
Králova Lhota 3, Králova Lhota

### Coop prodejna

mixed goods  
Nahořany 102, Nahořany  
tel. 491 435 534

### Potraviny Centrum

groceries  
Náměstí 34, Nový Hrádek  
tel. 491 478 150

### Potraviny – Grim Petr

groceries  
Náměstí 28, Nový Hrádek  
tel. 491 478 153

### Hruška

groceries  
Ohnišov 73, Ohnišov  
tel. 494 371 754

### Konzum

groceries  
Pohoří 84, Pohoří  
tel. 494 621 416

### Kubík

mixed goods  
Olešnice v Orlických horách 238  
Olešnice v Orlických horách  
tel. 494 660 301

### Miroslav Zelený

mixed goods  
Přibyslav 60, Přibyslav

### ■ Newsagents and tobacconists

#### Matouš Trafika

T. G. Masaryka 69

#### Trafika

Družební 96  
tel. 774 311 059

#### Trafika Machová Miloslava

Husovo náměstí 1215  
tel. 491 470 196

### ■ Services for cyclists

#### Jízdní kola Libra

cycle services, bicycle maintenance and sales  
V Aleji 745  
tel. 491 471 338, [www.librakola.cz](http://www.librakola.cz)

#### Municipal Information Centre

bicycle storage, loan of tools for minor repairs, sale of basic replacement parts  
Husovo náměstí 1225  
tel. 731 627 741, [www.infocentrum-nmmn.cz](http://www.infocentrum-nmmn.cz)

#### Penzion Na Hradčanech guesthouse

loan of electric bicycles  
Na Hradčanech 1095  
tel. 774 557 660, [www.penzionnahradcanech.cz](http://www.penzionnahradcanech.cz)

#### R2 SPORT

bicycle maintenance and sales  
U Zázvorky 1212  
tel. 774 711 972, [r2-sport.cz](http://r2-sport.cz)

### ■ Souvenirs

#### Hezké nezbytnosti

sale of small decorations and souvenirs  
Komenského 20  
tel. 732 166 272

#### Nové Město nad Metují Information Centre

sale of souvenirs and memorabilia  
Husovo náměstí 1225  
tel. 731 627 741, [www.infocentrum-nmmn.cz](http://www.infocentrum-nmmn.cz)

#### Nové Město nad Metují Castle

Husovo náměstí 1201  
tel. 491 470 523, [www.zamekmmn.cz](http://www.zamekmmn.cz)

### ■ Safety and Security in Nové Město nad Metují

#### Fire service

Volunteer Firefighters Association  
28. října 850  
tel. 150  
[www.hasicinm.cz](http://www.hasicinm.cz), [info@hasicinm.cz](mailto:info@hasicinm.cz)

#### Municipal Police

náměstí Republiky 6  
tel. 156  
[www.mestskapolicienm.cz](http://www.mestskapolicienm.cz)  
[mestska.policie@novemestonm.cz](mailto:mestska.policie@novemestonm.cz)

#### Police of the CR – Nové Město nad Metují district department

Komenského 146  
tel. 158, [nanovemestonm@pcr.cz](mailto:nanovemestonm@pcr.cz)

### ■ Taxi services

#### Taxi FENDY

Taxislužba Jan Fendrštát  
tel. 604 178 136

## Information Centre

### Nové Město nad Metují Municipal Information Centre

Husovo náměstí 1225

tel. +420 491 472 119, +420 731 627 741

[www.infocentrum-nmmn.cz](http://www.infocentrum-nmmn.cz)

**Opening hours:** April–October: Mon–Sun 9am–12 noon, 12.30pm–5pm  
November–March: Mon–Fri 9am–12 noon, 12.30pm–5pm  
/ Sat 10am–12 noon, 12.30pm–4pm

### Nové Město nad Metují Information Point

Na Zadomí 1210

tel. +420 491 470 331

[www.infocentrum-nmmn.cz](http://www.infocentrum-nmmn.cz)

**Opening hours:** May–September: Tue–Sun 9am–12 noon, 12.30pm–5pm  
October–April: Tue–Sat 10am–12 noon, 12.30pm–4pm

### Olešnice v Orlických horách Information Centre

Olešnice v Orlických horách 8, [www.olesnice.net](http://www.olesnice.net)

**Opening hours:** Current opening hours available at [www.olesnice.net](http://www.olesnice.net)

tel. do Centrum Informací +420 732 928 374

outside information centre opening hours, information and all promotional materials are provided by the council  
council tel. +420 494 660 163



# Accommodation and food

## ■ Restaurants

### Nové Město nad Metují

#### Bartoňova útulna

Peklo u Nového Města nad Metují  
tel.: +420 491 422 615, +420 777 131 368  
www.peklo-bartonovautulna.cz

#### Hotel Rajská zahrada

Komenského 70  
tel.: +420 773 777 773  
www.hotelrajskazahrada.cz

#### Hotel Rambousek

Komenského 60  
tel.: +420 491 470 403,  
+420 736 671 066  
www.rambousekhotel.cz

#### Hotel U Broučka

Husovo náměstí 1245  
tel.: +420 604 142 147, +420 603 457 915  
www.hotelubroucka.cz

#### Nowomiejski pensjonat

Kpt. Jaroše 469  
tel.: +420 734 380 694

#### Restaurace U Holubů

Žižkovo náměstí 40  
tel.: +420 702 439 622  
www.uholubu.eu

#### Railway restaurant U Paragána

Nádražní 127  
tel.: +420 603 803 928

#### Restaurace U Paďourů

Husovo náměstí 1239  
tel.: +420 491 471 773, +420 603 815 622  
www.restauracepadour.cz

#### Restauracja U Trunečků

Havlíčková 163  
tel.: +420 491 472 418, +420 604 281 270  
www.ceskakuchyne.com

#### Restaurant Dům č. 14

Husovo náměstí 1214  
tel.: +420 491 471 355, +420 777 141 214  
www.dumc14.cz

#### STOP restaurant

Družební 96  
tel.: +420 776 002 840 i +420 608 538 247  
www.stoprestaurant.cz

#### Vinárna U Drašnarů winebar

T. G. Masaryka 396  
tel.: +420 491 471 115

#### Vinárna U Řeháčků winebar

nám. Republiky 3  
tel.: +420 731 329 294

#### CASTLE – BAR

Husovo náměstí 1202  
tel.: +420 777 604 888,  
+420 777 604 800  
www.zamek-bar.cz

## ■ Fast-food

### Asian bistro

Komenského 133  
tel.: +420 776 522 675

### Bistro Merkur

Husovo náměstí 1218  
tel.: +420 734 441 678  
www.skolynome.cz

### Seladon – spaghetti and pizzeria

Husovo náměstí 1224  
tel.: +420 491 617 167  
www.seladon.cz/nudleria

## ■ Pizzerias

### Pizzeria Grandioso

Husovo náměstí 1206  
tel.: +420 722 353 536  
www.pizzagrandioso.cz

### Pizzeria Malecí

Malecí 205  
tel.: +420 608 740 603  
www.pizzeriemaleci.cz

## ■ Coffee shops

### Café Pohoda Jazz

Husovo náměstí 1205  
jedynie w sezonie letnim

### Kino kavárna

Boženy Němcové 720  
Tel.: +420 775 490 929

### Seladon

Husovo náměstí 1220  
tel.: +420 491 473 085  
www.seladon.cz

### CHEERS

Komenského 53  
Tel.: +420 606 631 063  
www.cheers-nm.cz

## ■ Patisseries

### Cukrárna Kamila

Husovo náměstí 1223  
tel.: +420 491 471 197, +420 604 719 169  
www.cukrarnakamila.cz

## ■ Bars, clubs, pubs

### Bar Kalič

Sokolská 52  
tel.: +420 777 055 299

### Musíc klub U Sama

Sokolská 365  
tel.: +420 774 999 710

### Pivnice Na Rychtě pub

Komenského 34  
tel.: +420 491 541 120

## Sport Club Sokolovna

– open in summer  
Sokolská  
tel.: +420 607 742 971

## DoSklepa – bar

Malecí 205  
Tel.: +420 722 560 550

## ■ Supermarkets

### ALBERT

T. G. Masaryka 2001, Nové Město nad  
open: Mon - Sun 7am – 8pm  
tel.: +420 800 402 402

### Penny market

T. G. Masaryka 2002, Nové Město n  
ad Metují, open: daily 7am – 8pm  
tel.: +420 800 202 220

## ■ Nearby restaurants

### Bakov

#### Hostinec Na Bakově inn

Bakov 2  
tel.: +420 773 676 058, www.hospodanabakove.cz

### Bohuslavice

#### Restaurace Orelna

Bohuslavice 201  
tel.: +420 775 947 635

#### Pohostinství U Ježků

Bohuslavice 3  
tel.: +420 491 475 125

### Kleny

#### Motorest

Kleny č. p. 46  
tel.: +420 775 576 516

### Nahořany

#### U Ivanky village inn

Nahořany  
tel.: +420 777 247 804

### Nový Hrádek

#### Restaurace Na Kovárně

Nový Hrádek  
tel.: +420 724 282 701, +420 491 478 152

### Ohnišov

#### Hostinec U Potoka 142 inn

Ohnišov  
tel.: +420 739 059 362

### Olešnice v Orlických horách

#### U Anděla pub

Olešnice v Orlických horách č. p. 15  
tel.: +420 739 059 753  
www.uandela.olesnice.net

#### Lovecký Zámek inn

Olešnice v Orlických horách č. p. 1  
tel.: +420 605 147 759

### Číhalka chalet

Olešnice v Orlických horách  
tel.: +420 494 660 138, +420 775 510 413

### Pohoří

#### Pohostinství U Jedničky

Pohoří 1  
tel.: +420 774 999 708

### Provodov-Šonov

#### Hostinec Ve Statku inn

Šonov 32  
tel.: +420 491 472 261

#### Village pub

(from 1. 7. also accommodation)  
Provodov – Šonov 170  
tel.: +420 777 113 443

### Přibyslav

#### Hospoda Na Bačce pub

Přibyslav 10  
tel.: +420 728 585 350

### Sendraž

#### Hospoda U Svatého Floriána pub

Sendraž 22  
tel.: +420 732 675 041

### Slavětín nad Metují

#### Cyklohostinec cycle inn

Slavětín nad Metují 2  
tel.: +420 603 339 185

### Slavoňov

#### Restaurace U Bětky

Slavoňov 10  
tel.: +420 491 472 491, +420 737 865 852  
www.restauraceslavonov.webgarden.cz

### Sněžné

#### Restaurant in the Horalka recreation centre

Sněžné v Orlických horách 1  
tel. +420 776 050 474, +420 774 958 622  
www.chatahoralka.cz

### Studnice

#### Hostinec U Studny inn

Studnice 19  
tel. +420 491 435 114

#### Restaurace U Petra

Studnice 107  
tel. +420 776 026 703, +420 499 599 703

### Sudín

#### Chalupa U Pažourků cottage

Sudín 14  
tel.: +420 724 514 420

### Vrchoviny

#### Hostinec U Škaldů inn

Vrchoviny 47, tel.: +420 774 531 322

### Vršovka

#### Letní parket (Kubb Klub Vršovka)

– open in summer  
Vršovka  
tel.: +420 608 222 586  
www.kubbklub.cz

#### Hospoda U jezera pub

– open in summer  
Vršovka, tel. +420 777 338 377

### Zblov

#### Hostinec Na Králíku inn

Zblov 19  
tel.: +420 604 604 011  
www.hostinecnakraliku.cz

### ■ Accommodation

#### Hotels

##### Hotel Rajská zahrada

Komenského 70  
tel.: +420 773 777 773  
www.hotelrajskazahrada.cz

##### Hotel Rambousek

Komenského 60  
tel.: +420 491 470 403, +420 736 671 066  
www.rambousekhotel.cz

##### Hotel U Broučka

Husovo náměstí 1245  
tel.: +420 491 472 571, +420 604 142 147  
www.hotelubroucka.cz

#### Apartments, guest houses, private accommodation

##### Apartmá nad Lípou

Čs. armády 887  
tel.: +420 491 474 159, +420 724 192 794  
www.apartma-nadlipou.unas.cz

##### Chaloupka Na Skále cottage

náměstí Republiky 75  
tel.: +420 491 470 444, +420 608 778 178  
www.psymania.wix.com/naskale

##### Novoměstský pension guest house

Kpt. Jaroše 469  
tel.: +420 723 067 596, +420 734 380 694  
www.novomestskypenzion.cz

##### Penzion Na Hradčanech guest house

Na Hradčanech 1095  
tel.: +420 777 557 665, +420 774 557 660  
www.penzionnahradcanech.cz

##### Penzion Na Františku guest house

Družební 961  
tel.: +420 776 622 776  
www.penzionnafrantisku.cz

##### Penzion Na Výsluní guest house

ul. ČSA 911  
tel.: +420 739 042 111, +420 602 435 715  
www.penzionnavysluni.eu

##### Pension Siesta guest house

Vrchoviny 175  
tel.: +420 777 754 748  
www.pension-siesta.cz

### Penzion U Pechanzů guest house

Třešňová 733  
tel.: +420 739 429 817  
www.penzionupechanzu.cz

### Privát Nováč

Havlíčková 190  
tel.: +420 491 470 085, +420 739 292 523  
www.privatnovac.cz

### STOP Apartmán

tel. +420 608 538 247, +420 776 002 840  
www.stoprestaurant.cz

### Ubytování Rosenkranz

Družební 923  
tel. +420 603 799 996, +420 602 886 729

### Private accommodation

Družební 924  
tel. +420 491 470 371, +420 606 527 500  
www.petruzekova.wz.cz

### Castle apartment

Husovo náměstí 1201  
tel. +420 491 470 159, +420 775 239 744  
www.zameknm.cz

### Hostels and cabin parks

#### Z-Sport hotel hostel

Pod Lipami 460  
tel. +420 603 451 931  
www.zsport.unas.cz

#### U Koupaliště cabin park

tel. +420 491 473 539, +420 604 593 544  
http://chatky.nachodsko.com

#### Hradčany boarding house

Na Hradčanech 1135  
tel. +420 731 443 914, +420 734 441 678

#### Králíček boarding house

Českých Bratří 1035  
tel. +420 731 443 914, +420 734 441 678

### ■ Nearby accommodation

#### Bačetín

##### Chalupa U Pažourků cottage

Sudín 14  
tel. +420 724 514 420  
Olešnice v Orlických horách

### Olešnice v Orlických horách

#### Apartament – Miloš Vlček

tel.: +420 732 720 918

#### Hospůdka U Anděla inn

tel.: +420 721 033 964  
www.uandela.olesnice.net

### Číhalka chalet

tel.: +420 494 660 138  
www.cihalka.cz

#### Chalupa pod Číhalkou cottage

tel.: +420 733 275 612

#### Chalupa pod Panským vrchem cottage

tel.: +420 724 251 357  
www.chalupaolesnice.cz



**Chata Juráška cottage**

tel.: +420 494 660 029, +420 776 606 171  
[www.ubytovani-olesnice-v-orlickych-horach.cz](http://www.ubytovani-olesnice-v-orlickych-horach.cz)

**Chalupa Sochová cottage**

tel.: +420 602 967 774  
[www.chalupa-pod-navsi.cz](http://www.chalupa-pod-navsi.cz)

**Lovecký Zámeček hunting lodge – accommodation**

tel.: +420 605 147 759  
[www.loveckyzamecek-olesnice.cz/penzion/](http://www.loveckyzamecek-olesnice.cz/penzion/)

**Hotel HARTMAN**

tel.: +420 777 888 455  
[www.hotel-hartman.cz](http://www.hotel-hartman.cz)

**Chalupa 56 cottage**

tel.: +420 731 086 448  
[www.chalupa56.cz](http://www.chalupa56.cz)

**Penzion Rozmarynka guest house**

tel.: +420 494 660 102  
[www.penzionrozmarynka.estranky.cz](http://www.penzionrozmarynka.estranky.cz)

**Škodův statek**

tel.: +420 603 767 196  
[www.skoduvstatek.cz](http://www.skoduvstatek.cz)

**Roubenka u skřítky traditional cottage**

tel.: +420 604 404 841  
[www.roubenkauskritka.cz](http://www.roubenkauskritka.cz)

**Peklo****Bartoňova útulna Peklo shelter**

Peklo u Nového Města nad Metují  
 tel.: +420 491 422 615, +420 777 131 368  
[www.peklo-bartonovautulna.cz](http://www.peklo-bartonovautulna.cz)

**Peklo – accommodation in cottages**

Lipí 36, Přibyslav  
 tel.: +420 491 422 615, +420 777 131 368  
[www.peklo-nemecek.cz](http://www.peklo-nemecek.cz)

**Polom****Stará škola Polom**

Polom 106  
 tel. +420 734 727 411, +420 704 142 898

**Provodov-Šonov****Ubytování Ve Statku**

Šonov 32  
 tel. +420 491 472 261

**Přibyslav****Apartmán Výchled**

Přibyslav 74  
 tel.: +420 732 666 392  
[www.apartman-vyhled.cz](http://www.apartman-vyhled.cz)

**Sendraž****Ubytování Sendraž**

tel.: +420 731 533 243  
[www.ubytovani-sendraz.cz](http://www.ubytovani-sendraz.cz)

**Slavětín nad Metují****Penzion Na Radosti guest house**

tel.: +420 604 998 389

**Penzion U Zvoníčků guest house**

tel.: +420 723 454 864  
[www.uzvonicku.cz](http://www.uzvonicku.cz)

**Slavoňov****Chalupa ve Slavoňově cottage**

tel.: +420 775 218 045  
[www.chalupaveslavonove.eu](http://www.chalupaveslavonove.eu)

**Sněžné****Restaurace U Petra**

tel.: +420 776 050 474, +420 774 958 622  
[www.chata-horalka.cz](http://www.chata-horalka.cz)

**Studnice****Restaurace U Petra**

tel. +420 776 026 703, +420 499 599 703  
[www.upetra.com](http://www.upetra.com)



**HOTEL**  
**RAJSKÁ ZAHRADA**  
 NOVÉ MĚSTO NAD METUJÍ

We need relaxation because we cannot work continuously.  
 Relaxation, then, is not an end; for it is taken for the sake of activity  
*Aristotelés ze Stageliry*

**Come to us to enjoy a time of leisure**  
**and undisturbed relaxation, free yourself from**  
**the stress of daily life, and draw new strength.**

swimming pool with counter-current and water spouts	massage	
health and relaxation baths	massage showers	modern gym
Finnish sauna	Kneipp path	
steam room and whirlpool bathtub		

| **Open to the public**  
 | **Available for private hire**  
 | **Gift vouchers**

We know we can create moments  
 of great pleasure for you; let us pamper  
 you in the friendly confines of our hotel;  
 you undoubtedly deserve it.

**f** [www.hotelrajskazahrada.cz](http://www.hotelrajskazahrada.cz)

Reception tel.: +420 773 777 773, Restaurant: +420 778 424 450  
 E-mail: [recepce@hotelrajskazahrada.cz](mailto:recepce@hotelrajskazahrada.cz)





veronika baicarova



## To the Rokole pilgrimage site

**Nové Město nad Metují, Krčín, Nahořany, Černčice, Slavětín, Bohuslavice, Pohoří, Opočno, Semechnice, Skalka, Dobré, Bačetín, Bystré, Janov, Rokole, Peklo, Nové Město nad Metují**

**Starting point:** Nové Město nad Metují, Na Rychtě bus station

From Nové Město nad Metují via Krčín (cycle route no. 4034) to Nahořany (cycle route no. 4059). Past the village at the bus stop, turn towards Dolsko, Osíček, below Černčice and continue along a less busy road to the village of Slavětín. Continue along the road to Bohuslavice, through Pohoří and to Opočno (you can

take a tour of the castle, castle park and game reserve), around “Broumar” fish pond and on to Semechnice. Continue here on the red walking trail to Skalka (you can take a tour of the castle and Jewish cemetery), where we continue on to Dobré (bathing available here). Here, turn left, going via Kamenice to Bačetín, then continue along the road to Bystré and on to Janov, Tis, Rokole (visit the Stations of the Cross, with refreshment available in the miraculous well, tour of the little church and chapel). From here along the well-worn route via Hradecké Doly (the ruined castle of Frymburk) to Peklo and N. Město n. Met.



## In the footsteps of Božena Němcová

**Nové Město nad Metují, Vrchoviny, Šonov, Provodov, Česká Skalice, Ratibořice, Špinka, Trubějov, Kramolna, Náchod, Bražec, Ostrovy, Nové Město nad Metují**

**Starting point:** Nové Město nad Metují

**Length of trip:** approx. 47 km.

From Rychta to Vrchoviny, Šonov and via Provodov to “Mydlárna” then towards Česká Skalice, but turning off at the Hotel going towards Zlích, where refreshment options are available, then continue to Ratibořice (cycle route no. 4018, you can take a tour of the castle and nature trail). Next continue across the bridge along the Úpa on the red walking trail to Slatinský mlýn (mill), where we turn onto the road and go to Červená Hora (refreshments

available). Continue along the road to Olešnice u Červeného Kostelce where we turn off to Špinka (bathing and refreshments available) and then continue along the road to the village of Trubějov, then along cycle route no. 4018 to Kramolna, where turn off the road onto the red walking trail and park around the 1866 military cemetery to the castle (tours available). From the castle, we drop steeply to Náchod, then to Bražec (along cycle route no. 4034) and along the River Metuje via “Ostrovy” to Peklo and Nové Město nad Metují.



# Paliva Jelen

■ Sale of brown – LED and black coal, Rekord 2“, 4“, 6“, 7“ carbon briquettes.

■ Sale of sorted sand, crushed 4/8, 8/16, 11/22, gravel 32/63, gravel 0/32, 0/63, dust 0/4 and five fractions of ornamental galls.

■ Processing and sale of soft and hardwood firewood.

■ Sales of mulch bark.

■ Everything including transport and coal composition.

■ We also offer packaged coal, pellets, coal and wood briquettes, packaged soft and hard packs in sacks, splinters, charcoal, grill briquettes, clay.  
We exchange PB bottles.

Mount the eco-boilers TOP Max cl. 4 and cl. 5 + EKO-DESIGN, we perform periodic revisions of TOP MAX boilers (Permit No. TOP0110).



**Business premises: Nové Město nad Metují, Havlíčkova 292, Mezilesí 128.**

**Tel. contact: +420 491 471 164, +420 606 223 635, +420 724 236 398,  
+420 702 059 231, +420 491 478 346.**

**Working hours: Mon – Sat 7.30–15.30, Fri 7.30–16.30.**

**[www.paliva-jelen.cz](http://www.paliva-jelen.cz)**

**[jelen.jo@seznam.cz](mailto:jelen.jo@seznam.cz)**



# Cultural Monuments in the Novoměstsko Region

## Husův sbor – Nové Město nad Metují

Husův sbor was built in 1932-33. It was designed by Ing. arch. Jindřich Freiwald of Hronov. The church is not open to the public. Regular Sunday services begin at 8.30 am.

## St Barbara Chapel and the former spa site – Rezek u Nového Města nad Metují

The chapel was built on the initiative of the Göstl family in 1736–37. The interior and spa are not open to the public.

## Church of the Nativity of Our Lady, Loreto chapel and the monastery site – Nové Město nad Metují

The Hospitaller monastery was founded in 1692 by the owner of the Nové Město estate, Jakub of Leslie. It was completed by Leopold of Leslie in 1767, when the monastery church was consecrated to the Nativity of Our Lady. The monastery premises are only open to the public on special occasions.

## Church of the Holy Trinity – Nové Město nad Metují

The church was built shortly after the town was founded in 1519. Regular Sunday services take place in the church.

## Church of the Holy Spirit – Nové Město nad Metují

May have been built as early as the 10th century, the current building is early Gothic design in the spirit of the 13th century. There is a belltower opposite the church.

## Church of St John the Baptist – Slavoňov

This entirely wooden church was built in 1553 with the aid of farmers named Koltačkovy of Blažkov. On the site of the church in addition to the graveyard is a wooden belltower from 1555 and a square-shaped wooden morgue from the 18th century. You can look inside the church through the locked grille, or you can arrange a visit with the local priest (tel. 491 471 435).

## All Saints' Church and graveyard

The church building dates back to the second half of the 16th century. The graveyard contains the graves of some major Nové Město figures, including the parents of composer, Bedřich Smetana. The church is not open to the public.

## Nové Město nad Metují Municipal Museum

### OPENING HOURS

May–September - Tuesday–Sunday: 9am - 5pm

October–April - Tuesday–Saturday: 10am – 4pm (closed on public holidays outside the main tourist season)

Lunch break 12.00 noon – 12.30 pm, final tour 30 minutes before closing. On prior arrangement with museum workers, tours can be undertaken outside these times.

[www.muzeum-nmmn.cz](http://www.muzeum-nmmn.cz).

## Nové Město nad Metují Zázvorka municipal gallery

### OPENING HOURS

May – September – Tuesday–Sunday: 9am – 5pm

October – April – Tuesday–Saturday: 10am – 4 pm (closed on public holidays)

Lunch break 12.00 noon – 12.30 pm, final tour 30 minutes before closing.

[www.muzeum-nmmn.cz](http://www.muzeum-nmmn.cz)

## Rokole pilgrimage site

An enchanting pilgrimage site with two chapels, a healing spring, loreta, pseudo-Gothic church and Way of the Cross. Located at the edge of the wood near Nové Hrádek and part of the village of Bohdašín and the Slavoňov parish.

## Utz's mechanical nativity scene – Olešnice v Orlických horách

This nativity scene is unique in that besides backwards and forwards movements, the figures move their heads, arms and legs and in some cases move closer and further away from each other.

### OPENING HOURS

January – December – Monday – Friday: 8.30am – 3.30 pm (in week open 8.30am – 3.30pm – with guide, Saturday and Sunday on arrangement)

[www.olesnice.net](http://www.olesnice.net)

## Bartoň-Dobenín family castle – Nové Město nad Metují

### OPENING HOURS

January, February, March, November, December: upon prior arrangement for at least 10 people on tel.: 491 470 523.

April, October: Tuesday – Friday upon prior arrangement on tel.: 491 470 523, Saturday, Sunday: 10am – 4 pm

May, June, September:

Monday closed, Tuesday - Sunday: 9am – 4pm

July, August: daily 9am - 5pm

### CASTLE GARDENS OPENING HOURS

(free access)

May, June, September: 9am – 4pm (Monday closed)

July, August: daily 9am – 5pm

[www.zameknm.cz](http://www.zameknm.cz)

## Frymburk ruined castle – Nový Hrádek

Frymburk castle was likely founded sometime at the beginning of the 14th century, no information is known about who founded it

## Výrov ruined castle – Nové Město nad Metují

Freely accessible tourist site, Juránkova vyhlídka viewing point over Nové Město nad Metují.



# Marked cycle routes

## Marked cycle routes

**Cycle route 4034** – Nové Město nad Metují – Peklo – Bražec, Starý Náchod / 10,6 km

**Cycle route 4034** – Nové Město nad Metují – Krčín – Slavětín nad Metují – Jaroměř / 22,4 km

**In the footsteps of the 1866**

**Austro-Prussian War battles**

KČT routes no. 4018, 4055, 4056, 4057

Ratibořice, castle – Staré bělidlo – Bílý most – Červený most – Slatinský mlýn – Červená Hora – Všeliby – Řešetova Lhota – Lhotky – Lhotecký Dvůr – turning to Myslivce – Vysokov, railway bridge – Branka (White Lion monument) – Václavice (Dobenin- oldest church in region, numerous monuments to the 1866 war) – Šonov u Nového Města nad Metují – Provodov Dornkov – Šeřeč – Kleny – obora Dubno – Zlích – Ratibořice

## Nature trails and recommended walks

**Key:**

**RWT** – red walking trail

**BWT** – blue walking trail

**GWT** – green walking trail

**YWT** – yellow walking trails

### Bohdašín

Recommended walk: to Rokole 2,5 km (Bohdašín – Tis along BWT, Tis – Rokole along GWT)

Rokole – pilgrimage site with chapel consecrated to Our Lady of Rokole, pseudo-Gothic church, loreto and Stations of the Cross

### Bohuslavice nad Metují

Zbytka nature reserve – comprised of alluvial woodland and meadows at the Dědina river bend where there are numerous protected plants and animals, part of one of the last moors in Bohemia.

### Borová

It was decided to construct a total of 11 heavy fortification buildings in Borová along the line Náchod, Dobrošov, Borová, Nový Hrádek. Of the 11 buildings, 5 are located within the village's land.

### Česká Čermná

– Bartoň gamekeeper's house designed by architect, Dušan Jurkovič.

Walk Česká Čermná – Dobrošov stronghold along YWT 3,3 km

### Jestřebí

Recommended walk: Jestřebí – Libchyně 1,3 km then GWT along the Libchyněský potok river valley to Nové Město nad Metují

### Olešnice in the Orlické Mountains

**Natural trail along the light fortifications around Olešnice in the Orlické Mountains**

You will encounter 4 model 36 light fortification buildings along this route, and you can continue from the marked route on to the renovated fortification buildings. This trail also offers a beautiful walk through Orlické Mountains scenery with a number of wonderful views.

This nature trail is a circuit which begins at the square, length approx. 6 km

### Feist Hill geological trail

This geological trail will lead you on a beautiful walk past the most interesting points of this unique geomorphologic topography.

The route begins at HARTMAN ski slope.

Visitors can enjoy refreshments in the restaurant open during the summer holidays. The restaurant has an area for sports and a kid's play area.

### Nový Hrádek

We recommend the walking route:

From Nový Hrádek to Frymburk castle route length 1 km,

Nový Hrádek – Peklo via Doly along RWT, route length 6,5 km

### Přibyslav

Village located above Pekelské údolí valley (nature reserve)

Walk Přibyslav – Peklo along GWT (green walking trail), route length 2,5 km

Walk Přibyslav – Koníček viewing point along GWT and along YWT, route length 500 m

### Rohenice

**Recommended walk:** Rohenice – Slavětín around the Tuří fish pond – fish farm and a number of protected bird species

### Sendraž

**Recommended walk:**

From Na Vartě viewing tower to Peklo nature reserve along BWT approx. 4 km through woodland.

From Sendraž village along GWT to Libchyně village and then along GWT along Libchyněský potok valley to Nové Město nad Metují approx. 6 km.

### Slavětín nad Metují

**Recommended trip:** from Slavětín along cycle route 4034 to Šestajovice – Motorcycle Museum

[www.muzeum-motocyklu.cz](http://www.muzeum-motocyklu.cz)

### Slavoňov

**Recommended trip:**

Along Bohdašinský stream and Klopotovské údolí valley to Nové Město nad Metují along YWT

Slavoňov – Rezek spa – Nové Město nad Metují along BWT

### Studnice

Recommended cycle route: 'Božena Němcová circuit' – KČT cycle route 4018 – cycle route length 35 km

### Vršovka

**Recommended walk:** Vršovka – Halín (Halínský fish pond, prehistoric cremation burial mound) approx. 2 km

Cycle route no. 4059 towards Čemčice or Spy passes here

### Vysokov

Nature trail Náchod – Vysokov – Václavice focused on the battle at Náchod in June 1866, length 8,5 km, 9 stops

## You can receive further information about trips

in the Information Centre on Husovo náměstí.

tel. +420 491 472 119

[info@muzeum-nmm.cz](mailto:info@muzeum-nmm.cz)

[www.infocentrum-nmm.cz](http://www.infocentrum-nmm.cz)

[www.facebook.com/micnovemesto](https://www.facebook.com/micnovemesto)

### MĚSTSKÉ MUZEUM

historie města • příroda • řemesla • hodinky PRIM  
history of the town • countryside • crafts and trades • PRIM watches  
historia miasta • przyroda • rzemiosła • zegarek PRIM



**NOVÉ MĚSTO NAD METUJÍ** +420 491 472 119  
**NA ZADOMÍ 1226** [www.muzeum-nmm.cz](http://www.muzeum-nmm.cz)

### MĚSTSKÁ GALERIE ZÁZVORKA

- lapidarium
- stálá expozice permanent exhibition • stała ekspozycja
- výstavy temporary exhibitions • wystawy
- vyhlídková věž viewing tower • wieża widokowa



**NOVÉ MĚSTO NAD METUJÍ** +420 491 470 334  
**NA ZADOMÍ 1210** [www.muzeum-nmm.cz](http://www.muzeum-nmm.cz)



## Along Klopotovské údolí valley to Slavoňov

(route length approx. 5 km along yellow walking trail)

It isn't just history and architecture which visitors and residents of Nové Město nad Metují can enjoy. We all enjoy going into the countryside occasionally – some of us just to clear our head, others to draw new energy, or to get adventure. It is no surprise, then, that Klopotov deer park is a popular destination for young and old alike. It is a stone's throw away from the historic centre, yet offers many spots showcasing the forest world, from animals and plants and forest scenery to mysterious sites steeped in legend.

Not all visitors realise, however, that the adventure doesn't end with the game parks. If you continue upstream along the valley next to Bohdašínský potok stream in the shade of the surrounding woods and wet rocks, you'll discover a small and secret cave which locals call Čertová díra (the Devil's Hole), and right nearby it the water has polished a flat rock such that it is almost smooth with just a shallow depression in the middle reminiscent of a hoofprint – the Devil's Hoofprint. We can only speculate what happened here when long ago a devil and a witch lived here, but today we need no longer fear encountering a devil in Klopotov; the only horns here belong to the goats who share their home in harmony with the local deer.

A little further on, the path widens and often you can see the trunks of felled trees stacked up here – the site serves as an intermediate storage site for loggers. Even town forests are locations of economic activities, and you need to be aware of this when taking a walk so that you aren't startled by the movement of forestry workers' cars, tractors or even horse-drawn carts. You can stop a while here and see what species and size of trees grow in our forests. Can you recognise the type of tree from the stacked-up trunks?

After about 200m, on the left bank of the stream you will see in the rocks an apparently dead tree left there after storms. But appearances can be deceiving; dead wood means a living forest and so this natural memorial is full of life. Squirrels have nests in some of its hollows, while it provides food as well as shelter to many insects, and many birds find their home here during the nesting season, while small mammals raise their young here. This kind of dead tree works both like an apartment block in a town and also a larder.

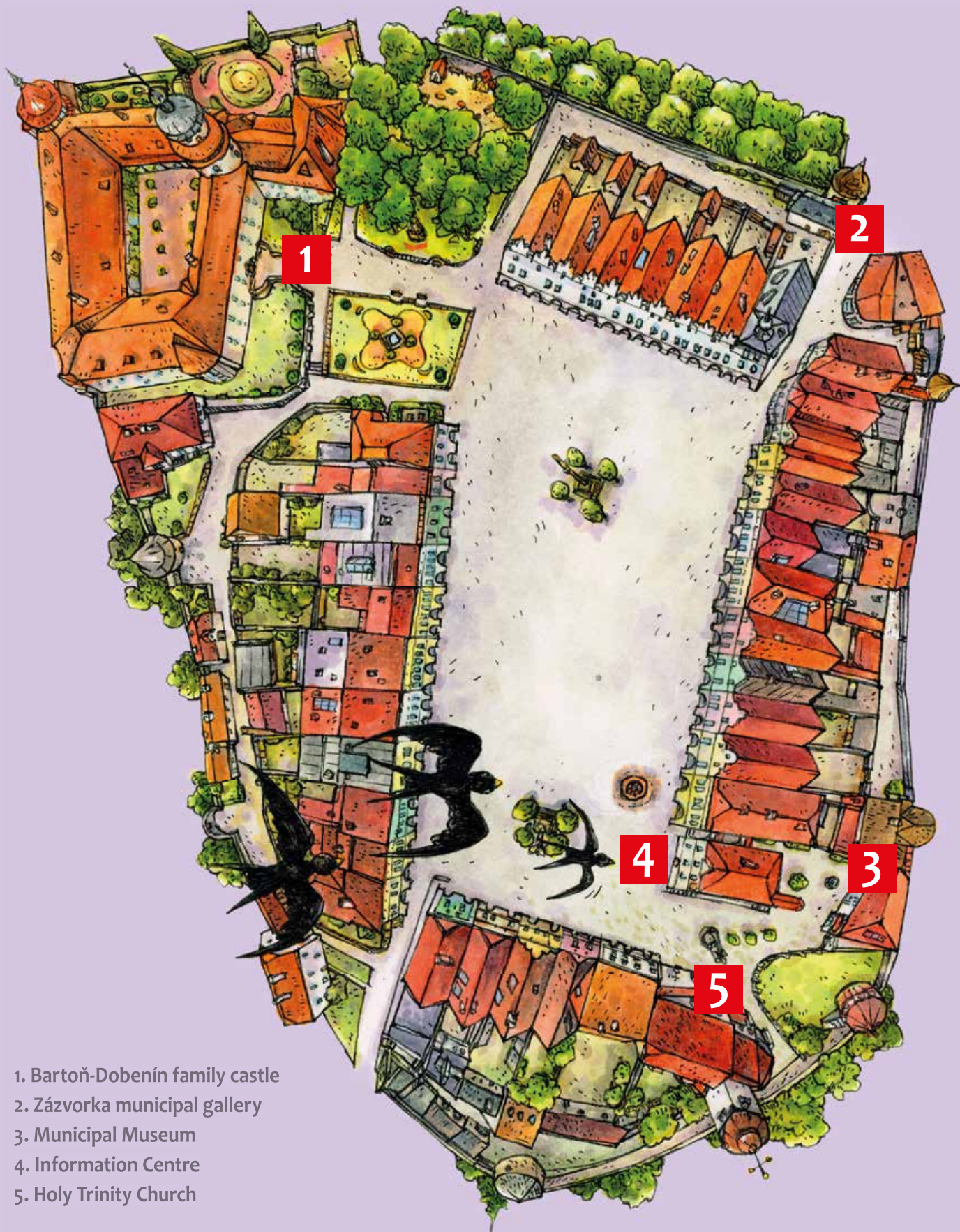
From here, continue along the rocky valley until you come to a stone spring flowing on the right side of the path. This is the Forester's Spring. Water didn't use to flow from it until work was done on it to give it today's appearance in 1919. Since that time, travellers have been able to find spring water refreshment here. But you shouldn't set out on a trip to Klopotovské údolí without essential equipment – a good špekáček sausage. Just a few steps from the spring is a covered fireplace with benches. The peasant Merta looks over the site to ensure order and good behaviour from the tunnel known as Mertova díra (Merta's Hole). You can spot this across the stream, but you won't find any silver here. Merta mined and sold the ore in secret, but the valley has been named after his travails (klopoty) – Klopotovské údolí.

Continuing upstream along the yellow walking trail, you will arrive along a forest path at the nearby village of Slavoňov. The path leads you right under the picturesque wooden Church of St John the Baptist, built from oak and spruce. The church interior is decorated with painted motifs. Although the paintings are of varying age, they work together as a single harmonious whole. Attentive visitors may notice a picture of a view of Nové Město nad Metují under the choir. The current church dates back to 1553, but the first records mentioning a church in Slavoňov date back to 1384, with all that is left of this being the bell tower with three bells which can be heard from miles around.





# Nové Město nad Metují Historic Centre



1. Bartoň-Dobenín family castle
2. Zázvorka municipal gallery
3. Municipal Museum
4. Information Centre
5. Holy Trinity Church

Welcome to Novoměstsko 2018. Published by the town of Nové Město nad Metují in partnership with the Novoměstsko DSO Region. Published in January 2018. Print run 8000 copies. Distributed free of charge. Editorial address: Městský úřad Nové Město nad Metují, náměstí Republiky 6, Nové Město nad Metují, 549 01, tel.: 491 419 655, e-mail: [zpravodaj@novemestonm.cz](mailto:zpravodaj@novemestonm.cz), IČO: 272 876. Polish translations: Mgr.ThLic. Zbigniew Romankiewicz, English translations: JŠ Lingva s.r.o. Printing: Tiskárna V&H Print Hlávko s.r.o. Programme organisers are responsible for any programme changes.